



**f.** **Première**  
BY H&S

Signature  
Residences For  
The Distinguished



# ABOUT FASHION TV

Fashion TV has been a celebratory name since 1997 with its top-notch fashion and lifestyle broadcasting. It has established an eternal and exclusive edge with original, unbiased and informative programming of fashion, style, beauty and trends.



COSMOPOLITAN  
PLATFORM

GLOBAL  
CONTENT

MILLIONS  
OF VIEWERS

INFLUENTIAL  
PARTNERSHIPS

EXQUISITE  
QUALITY

Disclaimer: The amenities, specifications, facilities, surrounding infrastructure, stock images and features shown and/or mentioned and the image renders used herein are purely indicative and promotional and may differ from the actuals. Except as expressly stated, the Company/Firm, its promoters, partners/directors, employees/ associates/ nominees and agents make no express or implied warranties about the accuracy of the facilities mentioned herein. It is clarified that all the facilities and amenities in the project are not currently functional/ operational and are subject to completion of the project.



# STYLING THE SKYLINE WITH FASHION RESIDENCES

**AT YAMUNA EXPRESSWAY**

Bringing Fashion to everyday life  
with BRANDED RESIDENCES

DESIGNING an Ultimate Choice  
of PANACHE for Celebrities

Presenting an Exclusive Edition  
of STYLISH ABODES



“ My vision is to make our life fashionable, on every corner and minute of our life. fashion should be the guiding light. We look forward to moving into the f Premiere residences ”

**MICHEL ADAM - FOUNDER F TV**



ARTISTIC IMAGE

Disclaimer: The amenities, specifications, facilities, surrounding infrastructure, stock images and features shown and/or mentioned and the image renders used herein are purely indicative and promotional and may differ from the actuals. Except as expressly stated, the Company/Firm, its promoters, partners/directors, employees/ associates/ nominees and agents make no express or implied warranties about the accuracy of the facilities mentioned herein. It is clarified that all the facilities and amenities in the project are not currently functional/ operational and are subject to completion of the project.



# KEY GROWTH DRIVERS OF THE YAMUNA EXPRESSWAY



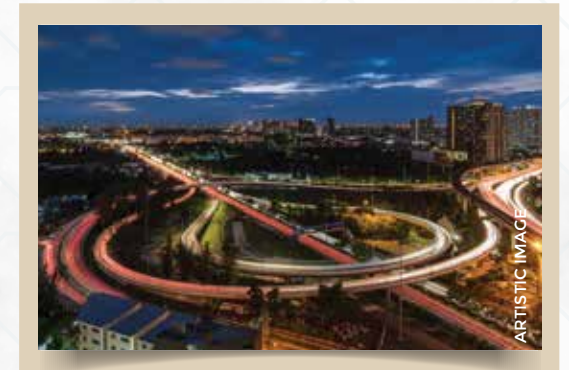
## JEWAR INTERNATIONAL AIRPORT

The upcoming Jewar International Airport themed and designed like the Zurich International Airport, the second of its kind in Delhi NCR, will lead to the eventual increase in population density in the areas.



## FILM CITY

Top Domestic & International Companies are keen on developing Film City along Yamuna Expressway in Greater Noida making way for handsome property returns.



## HIGHWAY CONNECTIVITY

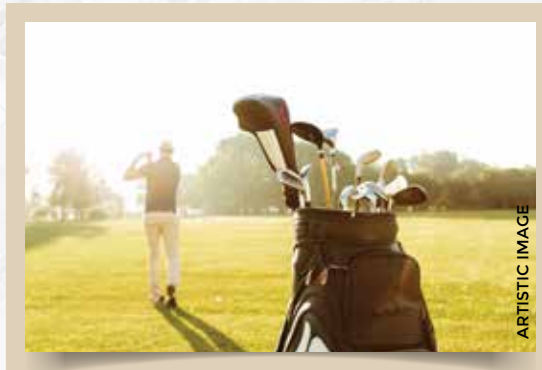
The extremely beneficial interlinkage of the Yamuna Expressway to two main cities of India, namely Mumbai and Delhi will bring great amount of business and location advantages



## THE MOTOR RACING TRACK

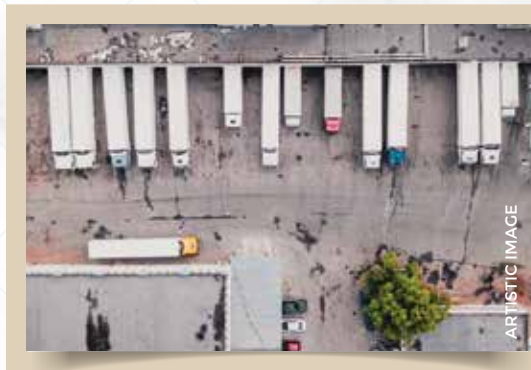
The only Motor Racing Track in India is situated along the Yamuna Expressway bringing national and international investment prospects

# KEY GROWTH DRIVERS OF THE YAMUNA EXPRESSWAY



## SPORTS FACILITIES

Homing a Cricket Stadium & Different Golf Courses to welcome Prominent Players and a Colossal Audience.



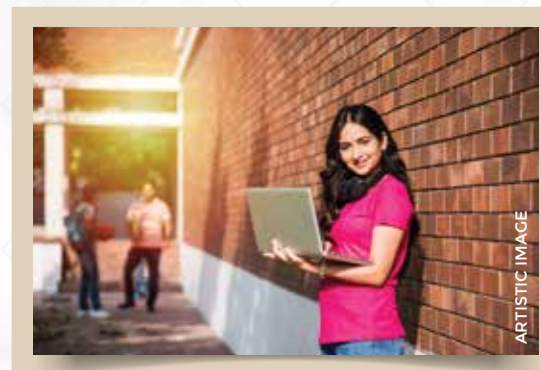
## LOGISTIC & MANUFACTURING HUB

India's Biggest Logistics and Manufacturing Hub is coming up in Close Proximity to upcoming Jewar International Airport.



## IT PARKS

The Big IT Giants of Industry are going to generate large-scale employment & relocating opportunities.



## EDUCATION

Aiming at a World-Class Education Access with Renowned Universities and Upcoming Prominent Institutions.



## NIGHT SAFARI

The Prestigious project for setting up India's First Night Safari will create a new Recreational opportunity.



# LIFESTYLE FOR THE FAST & FABULOUS



**Disclaimer:** All the images, walkthroughs, visuals and render images used in the brochure are only illustrative in nature and are intended to convey the concept and vision for the homes and in no manner depict the actual images. All the images, walkthroughs, visuals and render images used are for advertisement and promotional purposes only and the original and actual images of the finished unit(s) and specification are subject to variation. The dimensions depicted in the brochure do not form part of any contract or warranty.





ACTUAL IMAGE

# ROUTING A RACE TO REGAL RESIDENCES

Settle aside the most superiorly developed and the one and only motor Racing track in india to ace the race of abundant possibilites of national and international prominence Accelerate your Lifestyle with a progressive Abode on this Motor Racing Track in Greater Noida, Uttar Pradesh.



ACTUAL IMAGE

**Disclaimer:** All the images, walkthroughs, visuals and render images used in the brochure are only illustrative in nature and are intended to convey the concept and vision for the homes and in no manner depict the actual images. All the images, walkthroughs, visuals and render images used are for advertisement and promotional purposes only and the original and actual images of the finished unit(s) and specification are subject to variation. The dimensions depicted in the brochure do not form part of any contract or warranty.





ACTUAL IMAGE

**Disclaimer:** All the images, walkthroughs, visuals and render images used in the brochure are only illustrative in nature and are intended to convey the concept and vision for the homes and in no manner depict the actual images. All the images, walkthroughs, visuals and render images used are for advertisement and promotional purposes only and the original and actual images of the finished unit(s) and specification are subject to variation. The dimensions depicted in the brochure do not form part of any contract or warranty.



# MADE WITH MAJESTIC MAGNIFICENCE



ARTISTIC IMAGE

**Disclaimer:** All the images, walkthroughs, visuals and render images used in the brochure are only illustrative in nature and are intended to convey the concept and vision for the homes and in no manner depict the actual images. All the images, walkthroughs, visuals and render images used are for advertisement and promotional purposes only and the original and actual images of the finished unit(s) and specification are subject to variation. The dimensions depicted in the brochure do not form part of any contract or warranty.





ARTISTIC IMAGE

**Disclaimer:** All the images, walkthroughs, visuals and render images used in the brochure are only illustrative in nature and are intended to convey the concept and vision for the homes and in no manner depict the actual images. All the images, walkthroughs, visuals and render images used are for advertisement and promotional purposes only and the original and actual images of the finished unit(s) and specification are subject to variation. The dimensions depicted in the brochure do not form part of any contract or warranty.



# STYLING THE ART OF EXCLUSIVITY



ARTISTIC IMAGE

**Disclaimer:** All the images, walkthroughs, visuals and render images used in the brochure are only illustrative in nature and are intended to convey the concept and vision for the homes and in no manner depict the actual images. All the images, walkthroughs, visuals and render images used are for advertisement and promotional purposes only and the original and actual images of the finished unit(s) and specification are subject to variation. The dimensions depicted in the brochure do not form part of any contract or warranty.





SKY LOUNGE

Artistic Image



AMPHITHEATRE

Artistic Image



WELCOME LOBBY

Artistic Image





# HAUTE COUTURE HOME

Strategically located just off the state-of-the-art Yamuna Expressway overlooking the Motor Racing track

An exclusive residents 'Sky Lounge' set on level 22-23 with magnificent views

Club Premiere with a grand pool, gymnasium, steam room and a multipurpose hall

Amphitheatre, badminton / basketball court, tennis court for outdoor recreational activities

Choice of 2 & 3 BHK Signature Style Residences

**Disclaimer:** The amenities, specifications, facilities, surrounding infrastructure, stock images and features shown and/or mentioned and the image renders used herein are purely indicative and promotional and may differ from the actuals. Except as expressly stated, the Company/Firm, its promoters, partners/directors, employees/ associates/ nominees and agents make no express or implied warranties about the accuracy of the facilities mentioned herein. It is clarified that all the facilities and amenities in the project are not currently functional/ operational and are subject to completion of the project.



# SITE PLAN



1. Guard Room & Main entry

5. Kids Play area

9. Basketball/Badminton Court

13. Kids Pool

17. Seating Under Canopy

2. Tower Entrance Plaza

6. Sit Out Space

10. Tennis Court

14. Main Pool

3. Towers

7. Pavilion

11. Lawns

15. Pool Deck

4. Jogging path

8. Amphitheatre

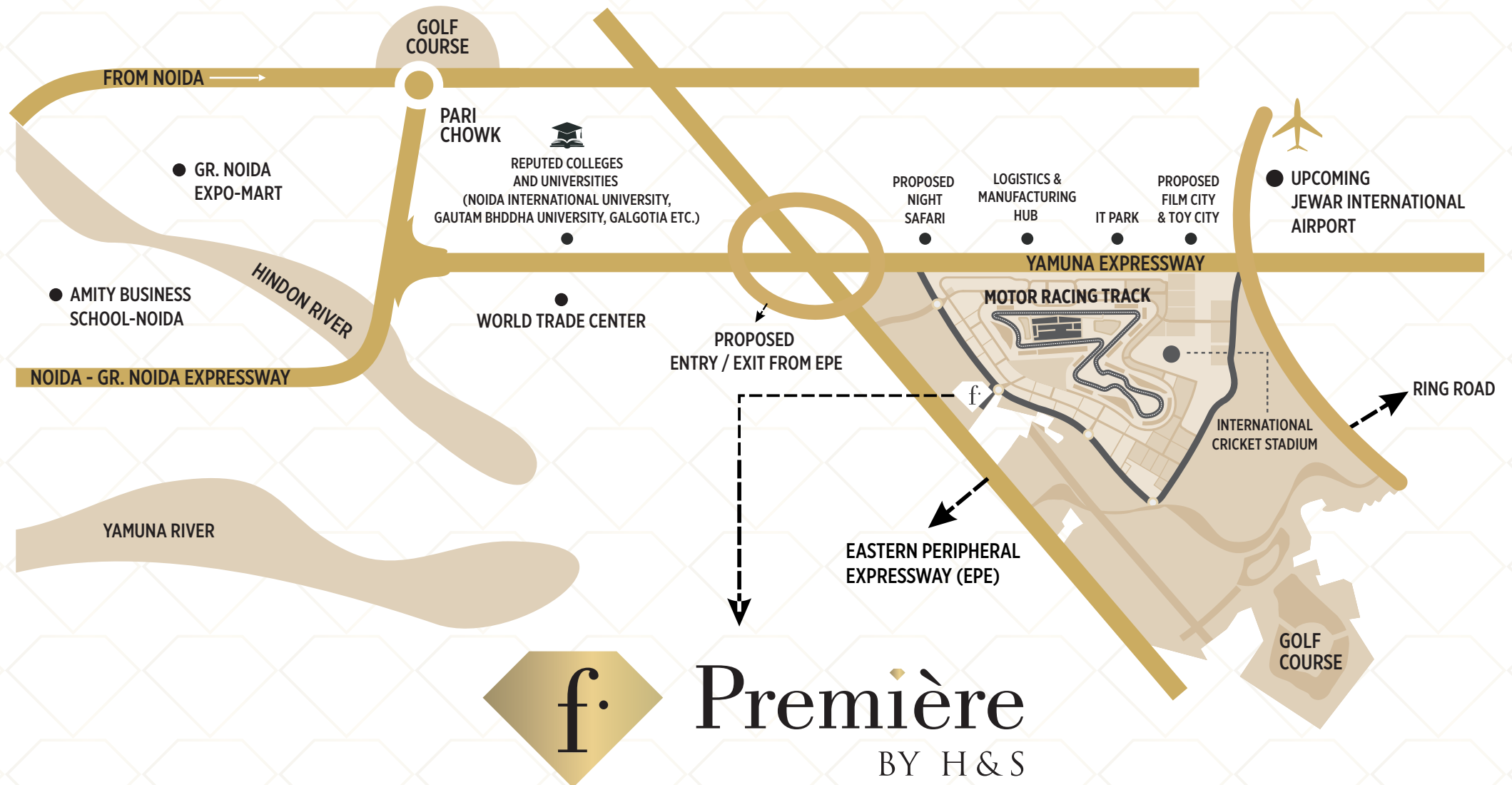
12. Greens

16. Juice Bar

**Disclaimer:** The amenities, specifications, facilities, surrounding infrastructure, stock images and features shown and/or mentioned and the image renders used herein are purely indicative and promotional and may differ from the actuals. Except as expressly stated, the Company/Firm, its promoters, partners/directors, employees/ associates/ nominees and agents make no express or implied warranties about the accuracy of the facilities mentioned herein. It is clarified that all the facilities and amenities in the project are not currently functional/ operational and are subject to completion of the project.



# LOCATION MAP

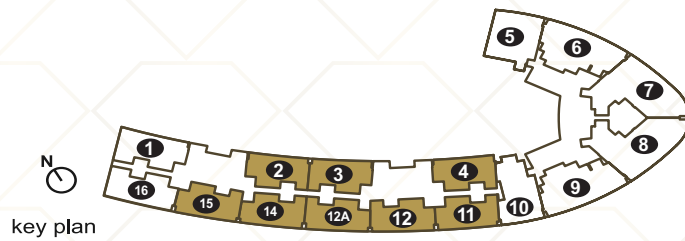
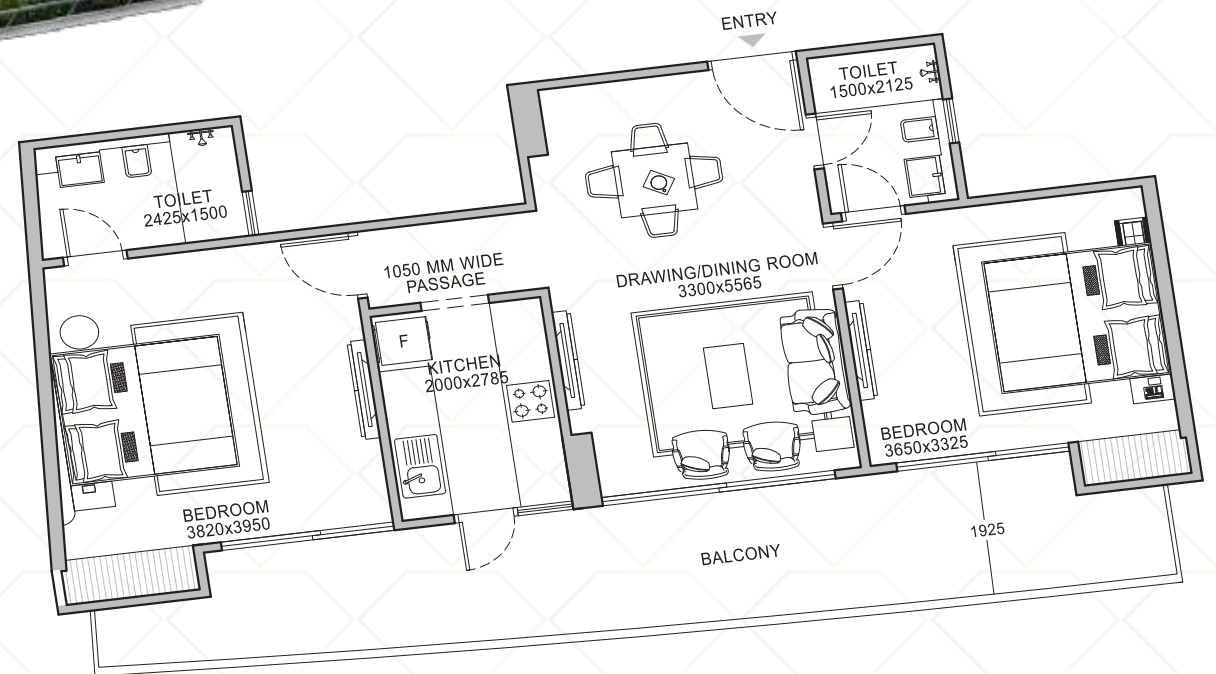


MAP NOT TO SCALE

**Disclaimer:** The amenities, specifications, facilities, surrounding infrastructure, stock images and features shown and/or mentioned and the image renders used herein are purely indicative and promotional and may differ from the actuals. Except as expressly stated, the Company/Firm, its promoters, partners/directors, employees/ associates/ nominees and agents make no express or implied warranties about the accuracy of the facilities mentioned herein. It is clarified that all the facilities and amenities in the project are not currently functional/ operational and are subject to completion of the project. Whilst every attempt has been made to ensure the accuracy of the floor plan contained here, measurements of doors, windows, rooms and any other item are approximate, the same as contained in the brochure are only tentative and indicative and are subject to variation. The Floor plans are intended to give only a general indication of the proposed layout and subject to change without prior notice. All images, floor plans and dimensions do not form part of and are not intended to form part any contract.



# FLOOR PLAN



## UNIT TYPE - 2 BHK

**1256.68 SQ. FT. - 1291.07 SQ. FT.**  
(116.74 sq. mt. - 119.94 sq. mt.)

**UNIT COVERED AREA:**  
970.70 sq. ft. - 977.91 sq. ft.  
90.18 sq. mt. - 90.85 sq. mt.

**UNIT CARPET AREA:**  
666.83 sq. ft. - 685.88 sq. ft.  
61.95 sq. mt. - 63.17 sq. mt.

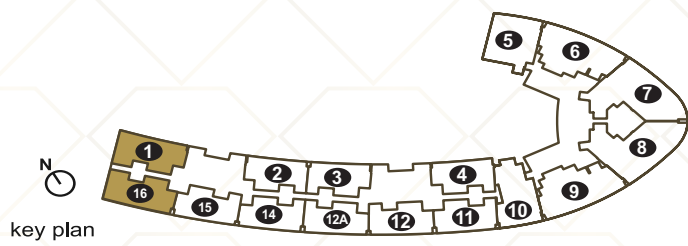
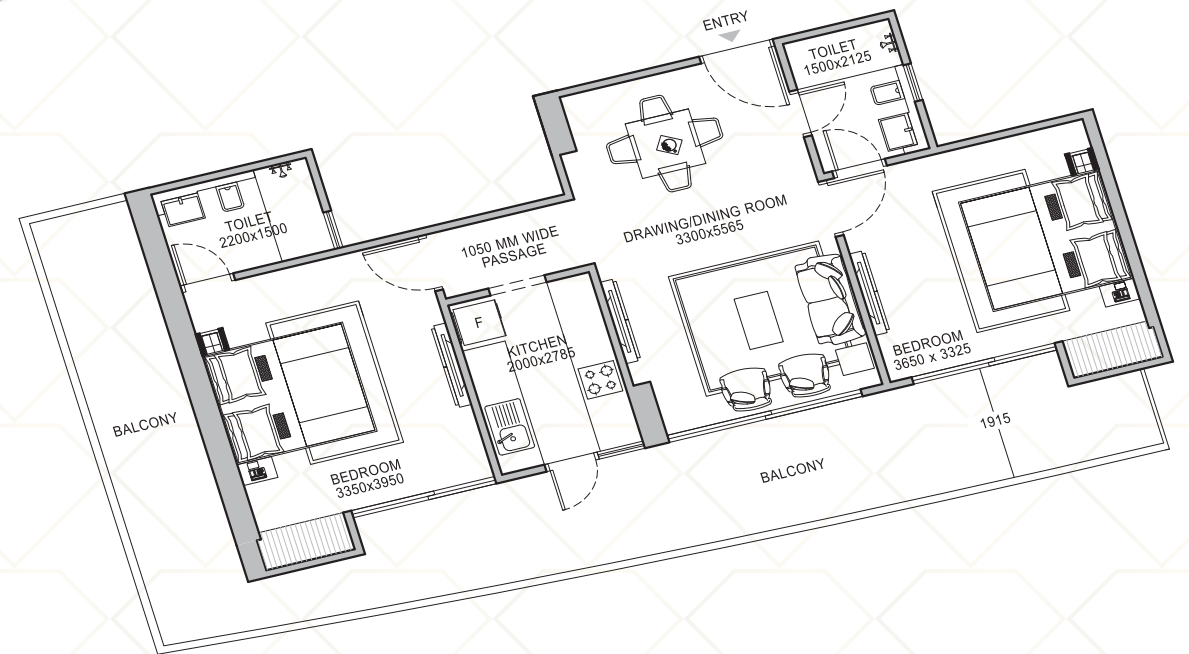
**BALCONY AREA:**  
227.77 sq. ft. - 223.89 sq. ft.  
21.16 sq. mt. - 20.79 sq. mt.

DESCRIPTION	SIZES IN FEET	SIZES IN MILLIMETERS	DESCRIPTION	SIZES IN FEET	SIZES IN MILLIMETERS
DRAWING/ DINING ROOM	10'-10" X 18'-3"	3300 X 5565	BEDROOM	12'-0" X 10'-11"	3650 X 3325
KITCHEN	6'-7" X 9'-1"	2000 X 2785	TOILET	4'-11" X 7'-0"	1500 X 2125
BEDROOM	12'-6" X 13'-0"	3820 X 3950	BALCONY : MAX. DEPTH	6'-4"	1925
TOILET	7'-11" X 4'-11"	2425 X 1500			

**Disclaimer:** Whilst every attempt has been made to ensure the accuracy of the floor plan contained here, measurements of doors, windows, rooms and any other item are approximate, the same as contained in the brochure are only tentative and indicative and are subject to variation. The Floor plans are intended to give only a general indication of the proposed layout and subject to change without prior notice. All images, floor plans and dimensions do not form part of and are not intended to form part any contract. The area of the unit mentioned against each category is tentative and indicative and the floor sizes/areas in each category may vary depending upon the location and layout of the particular unit. The total price of the unit shall be quantified based on the actual measurements once the unit has been completed in its entirety, and if any additional area is measured, the demand for the same shall be raised in the final demand at the time of offer of possession. The buyer agrees to a variation of 20% in the area of the flat and the terms and conditions shall be read for the sale of the property with variation to the extent of 20%.



# FLOOR PLAN



## UNIT TYPE - 2 BHK + TERRACE

**1435.03 SQ. FT. - 1468 SQ. FT.**  
(133.31 sq. mt. - 136.38 sq. mt.)

DESCRIPTION	SIZES IN FEET	SIZES IN MILLIMETERS	DESCRIPTION	SIZES IN FEET	SIZES IN MILLIMETERS
DRAWING/ DINING ROOM	10'-10" X 18'-4"	3300 X 5565	BEDROOM	12'-0" X 10'-11"	3650 X 3325
KITCHEN	6'-7" X 9'-1"	2000 X 2785	TOILET	4'-11" X 7'-0"	1500 X 2125
BEDROOM	11'-0" X 13'-0"	3350 X 3950	BALCONY : MAX. DEPTH	6'-3"	1915
TOILET	7'-3" X 4'-11"	2200 X 1500			

**UNIT COVERED AREA:**  
1086.95 sq. ft. - 1111.92 sq. ft.  
100.98 sq. mt. - 103.29 sq. mt.

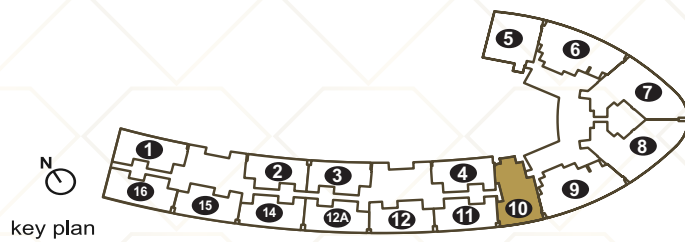
**UNIT CARPET AREA:**  
666.98 sq. ft. - 667.05 sq. ft.  
61.96 sq. mt. - 61.97 sq. mt.

**BALCONY AREA:**  
367.48 sq. ft. - 336.70 sq. ft.  
34.53 sq. mt. - 31.28 sq. mt.

**Disclaimer:** Whilst every attempt has been made to ensure the accuracy of the floor plan contained here, measurements of doors, windows, rooms and any other item are approximate, the same as contained in the brochure are only tentative and indicative and are subject to variation. The Floor plans are intended to give only a general indication of the proposed layout and subject to change without prior notice. All images, floor plans and dimensions do not form part of and are not intended to form part any contract. The area of the unit mentioned against each category is tentative and indicative and the floor sizes/areas in each category may vary depending upon the location and layout of the particular unit. The total price of the unit shall be quantified based on the actual measurements once the unit has been completed in its entirety, and if any additional area is measured, the demand for the same shall be raised in the final demand at the time of offer of possession. The buyer agrees to a variation of 20% in the area of the flat and the terms and conditions shall be read for the sale of the property with variation to the extent of 20%.



# FLOOR PLAN



key plan

## UNIT TYPE - 2 BHK LX

**1656.72 SQ. FT.**  
(153.91 sq. mt.)

**UNIT COVERED AREA:**  
1254.87 sq. ft.  
116.58 sq. mt.

**UNIT CARPET AREA:**  
883.94 sq. ft.  
82.12 sq. mt.

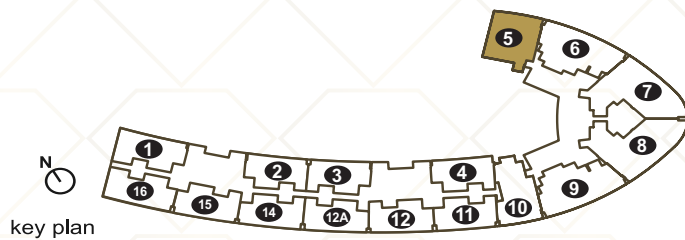
**BALCONY AREA:**  
295.9 sq. ft.  
27.48 sq. mt.

DESCRIPTION	SIZES IN FEET	SIZES IN MILLIMETERS	DESCRIPTION	SIZES IN FEET	SIZES IN MILLIMETERS
DRAWING/ DINING ROOM	11'-2" X 22'-10"	3400 X 6895	STUDY ROOM	11'-5" X 9'-0"	3485 X 2740
KITCHEN	7'-5" X 9'-0"	2250 X 2750	MASTER BEDROOM	11'-7" X 12'-7"	3535 X 3830
BEDROOM	11'-9" X 12'-0"	3575 X 3650	TOILET	4'-11" X 7'-5"	1500 X 2250
TOILET	7'-0" X 4'-11"	2135 X 1500	BALCONY : MAX. DEPTH	9'-7"	2920

**Disclaimer:** Whilst every attempt has been made to ensure the accuracy of the floor plan contained here, measurements of doors, windows, rooms and any other item are approximate, the same as contained in the brochure are only tentative and indicative and are subject to variation. The Floor plans are intended to give only a general indication of the proposed layout and subject to change without prior notice. All images, floor plans and dimensions do not form part of and are not intended to form part any contract. The area of the unit mentioned against each category is tentative and indicative and the floor sizes/areas in each category may vary depending upon the location and layout of the particular unit. The total price of the unit shall be quantified based on the actual measurements once the unit has been completed in its entirety, and if any additional area is measured, the demand for the same shall be raised in the final demand at the time of offer of possession. The buyer agrees to a variation of 20% in the area of the flat and the terms and conditions shall be read for the sale of the property with variation to the extent of 20%.



# FLOOR PLAN



## UNIT TYPE - 2 BHK LX

**1685.71 SQ. FT.**  
(156.6 sq. mt.)

**UNIT COVERED AREA:**  
1276.83 sq. ft.  
118.62 sq. mt.

**UNIT CARPET AREA:**  
700.2 sq. ft.  
65.05 sq. mt.

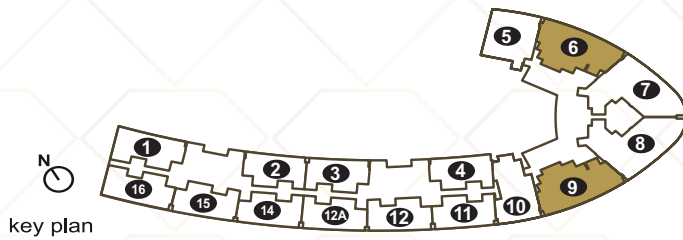
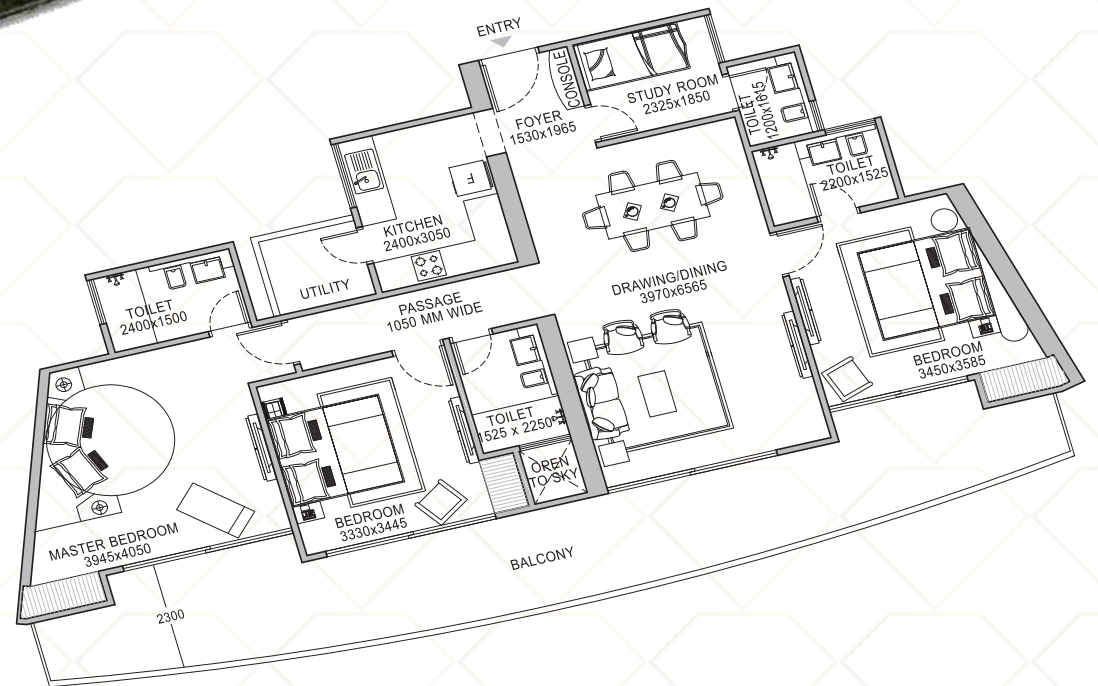
**BALCONY AREA:**  
484.49 sq. ft.  
45.01 sq. mt.

DESCRIPTION	SIZES IN FEET	SIZES IN MILLIMETERS	DESCRIPTION	SIZES IN FEET	SIZES IN MILLIMETERS
FOYER	4'-0" X 5'-8"	1220 X 1725	MASTER BEDROOM	10'-10" X 12'-0"	3320 X 3655
DRAWING/ DINING ROOM	11'-2" X 17'-10"	3400 X 5415	DRESS	6'-2" X 4'-11"	1885 X 1500
KITCHEN	6'-9" X 9'-0"	2065 X 2750	TOILET	4'-11" X 7'-5"	1500 X 2250
BEDROOM	11'-5" X 12'-4"	3485 X 3765	BALCONY : MAX. DEPTH	10'-3"	3135
TOILET	4'-11" X 7'-5"	1500 X 2250			

**Disclaimer:** Whilst every attempt has been made to ensure the accuracy of the floor plan contained here, measurements of doors, windows, rooms and any other item are approximate, the same as contained in the brochure are only tentative and indicative and are subject to variation. The Floor plans are intended to give only a general indication of the proposed layout and subject to change without prior notice. All images, floor plans and dimensions do not form part of and are not intended to form part any contract. The area of the unit mentioned against each category is tentative and indicative and the floor sizes/areas in each category may vary depending upon the location and layout of the particular unit. The total price of the unit shall be quantified based on the actual measurements once the unit has been completed in its entirety, and if any additional area is measured, the demand for the same shall be raised in the final demand at the time of offer of possession. The buyer agrees to a variation of 20% in the area of the flat and the terms and conditions shall be read for the sale of the property with variation to the extent of 20%.



# FLOOR PLAN



## UNIT TYPE - 3 BHK

**2219.05 SQ. FT. - 2224.02 SQ. FT.**  
(206.15 sq. mt. - 206.61 sq. mt.)

**UNIT COVERED AREA:**  
1680.8 sq. ft. - 1684.57 sq. ft.  
156.15 sq. mt. - 156.50 sq. mt.

**UNIT CARPET AREA:**  
1164.23 sq. ft. - 1164.99 sq. ft.  
108.15 sq. mt. - 108.23 sq. mt.

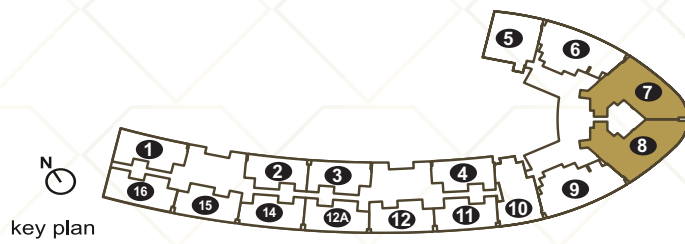
**BALCONY AREA:**  
409.03 sq. ft. - 410.65 sq. ft.  
37.99 sq. mt. - 38.15 sq. mt.

DESCRIPTION	SIZES IN FEET	SIZES IN MILLIMETERS	DESCRIPTION	SIZES IN FEET	SIZES IN MILLIMETERS
FOYER	5'-0" X 6'-6"	1530 X 1965	TOILET	7'-3" X 5'-0"	2200 X 1525
DRAWING/ DINING ROOM	13'-0" X 21'-8"	3970 X 6565	BEDROOM	10'-11" X 11'-4"	3330 X 3445
KITCHEN	7'-11" X 10'-0"	2400 X 3050	TOILET	5'-0" X 7'-5"	1525 X 2250
STUDY ROOM	7'-9" X 6'-1"	2325 X 1850	MASTER BEDROOM	13'-0" X 13'-3"	3945 X 4050
TOILET	3'-11" X 5'-3"	1200 X 1615	TOILET	7'-11" X 4'-11"	2400 X 1500
BEDROOM	11'-4" X 11'-9"	3450 X 3585	BALCONY : MAX. DEPTH	7'-6"	2300

**Disclaimer:** Whilst every attempt has been made to ensure the accuracy of the floor plan contained here, measurements of doors, windows, rooms and any other item are approximate, the same as contained in the brochure are only tentative and indicative and are subject to variation. The Floor plans are intended to give only a general indication of the proposed layout and subject to change without prior notice. All images, floor plans and dimensions do not form part of and are not intended to form part any contract. The area of the unit mentioned against each category is tentative and indicative and the floor sizes/areas in each category may vary depending upon the location and layout of the particular unit. The total price of the unit shall be quantified based on the actual measurements once the unit has been completed in its entirety, and if any additional area is measured, the demand for the same shall be raised in the final demand at the time of offer of possession. The buyer agrees to a variation of 20% in the area of the flat and the terms and conditions shall be read for the sale of the property with variation to the extent of 20%.



# FLOOR PLAN



## UNIT TYPE - 3 BHK LX

**2594.79 SQ. FT. - 2604.17 SQ. FT.**  
(241.06 sq. mt. - 241.93 sq. mt.)

**UNIT COVERED AREA:**  
1965.4 sq. ft. - 1972.5 sq. ft.  
182.59 sq. mt. - 183.24 sq. mt.

**UNIT CARPET AREA:**  
1390.39 sq. ft. - 1391.81 sq. ft.  
129.17 sq. mt. - 129.3 sq. mt.

**BALCONY AREA:**  
448.86 sq. ft. - 449.29 sq. ft.  
41.70 sq. mt. - 41.74 sq. mt.

DESCRIPTION	SIZES IN FEET	SIZES IN MILLIMETERS	DESCRIPTION	SIZES IN FEET	SIZES IN MILLIMETERS
FOYER	8'-11" X 4'-11"	2730 X 1500	BEDROOM	10'-11" X 11'-10"	3330 X 3615
DRAWING/ DINING ROOM	12'-2" X 32'-0"	3700 X 9690	TOILET	7'-7" X 5'-0"	2300 X 1525
KITCHEN	7'-10" X 11'-0"	2400 X 3350	MASTER BEDROOM	12'-0" X 11'-10"	3650 X 3615
STUDY ROOM	6'-9" X 8'-2"	2050 X 2505	DRESS	7'-4" X 9'-4"	2225 X 2840
TOILET	4'-6" X 3'-11"	1350 X 1200	TOILET	7'-9" X 5'-0"	2365 X 1525
BEDROOM	10'-10" X 11'-10"	3300 X 3615	BALCONY : MAX. DEPTH	7'-9"	2355
TOILET	5'-0" X 7'-6"	1525 X 2250			

**Disclaimer:** Whilst every attempt has been made to ensure the accuracy of the floor plan contained here, measurements of doors, windows, rooms and any other item are approximate, the same as contained in the brochure are only tentative and indicative and are subject to variation. The Floor plans are intended to give only a general indication of the proposed layout and subject to change without prior notice. All images, floor plans and dimensions do not form part of and are not intended to form part any contract. The area of the unit mentioned against each category is tentative and indicative and the floor sizes/areas in each category may vary depending upon the location and layout of the particular unit. The total price of the unit shall be quantified based on the actual measurements once the unit has been completed in its entirety, and if any additional area is measured, the demand for the same shall be raised in the final demand at the time of offer of possession. The buyer agrees to a variation of 20% in the area of the flat and the terms and conditions shall be read for the sale of the property with variation to the extent of 20%.



# SPECIFICATIONS

<b>LIVING &amp; DINING</b>	<p>WALLS: Plaster of Paris punning / Premium quality OBD / plastic enamel paint or texture paint.</p> <p>FLOOR: Premium quality vitrified tiles.</p> <p>WINDOWS/ FAÇADE: UPVC windows / sliders / doors and external grade paint.</p>
<b>PASSAGE</b>	<p>WALLS: Plaster of Paris punning / Premium quality OBD /Plastic enamel paint.</p> <p>FLOORS: Premium Vitrified Tiles.</p>
<b>BEDROOMS</b>	<p>WALLS: Plaster of Paris punning / Premium quality OBD / Plastic enamel paint.</p> <p>FLOORS: Laminated Wooden Flooring/ Premium vitrified tiles.</p> <p>DOORS: Wooden Laminated/Veneered Flush Doors.</p> <p>WINDOWS: UPVC windows/ sliders/ doors &amp; external grade paint.</p>
<b>TOILETS</b>	<p>WALLS: Premium quality ceramic tiles cladded full height.</p> <p>FLOORS: Premium quality ceramic tiles.</p> <p>DOORS: Wooden Laminated/Veneered Flush Doors</p> <p>WINDOWS: UPVC windows.</p> <p>SANITARY WARE: Premium CP fittings &amp; Chinaware fixtures.</p>
<b>KITCHEN</b>	<p>FLOORS: Premium quality Anti-Skid Vitrified tiles.</p> <p>WINDOWS: UPVC windows/ doors.</p> <p>SANITARY WARE: Premium CP fittings, Granite counter, SS Sink with drain board.</p>
<b>BALCONIES</b>	<p>WALLS: External grade paint.</p> <p>FLOORS: Anti-Skid exterior tiles.</p> <p>WINDOWS: External grade paint</p> <p>RAILING: Balcony Railing with toughened glass panels.</p>
<b>STUDY / UTILITY ROOM / TOILET</b>	<p>WALLS: Premium quality OBD / Plastic enamel paint.</p> <p>FLOORS: Vitrified / Ceramic tiles.</p> <p>WINDOWS: UPVC windows.</p> <p>SANITARY: CP fittings &amp; Chinaware fixtures.</p>
<b>DOORS</b>	<p>Wooden Laminated/Veneered Flush Doors</p>

**Disclaimer:** Whilst every attempt has been made to ensure the accuracy of the floor plan contained here, measurements of doors, windows, rooms and any other item are approximate, the same as contained in the brochure are only tentative and indicative and are subject to variation. The Floor plans are intended to give only a general indication of the proposed layout and subject to change without prior notice. All images, floor plans and dimensions do not form part of and are not intended to form part any contract. The area of the unit mentioned against each category is tentative and indicative and the floor sizes/areas in each category may vary depending upon the location and layout of the particular unit. The total price of the unit shall be quantified based on the actual measurements once the unit has been completed in its entirety, and if any additional area is measured, the demand for the same shall be raised in the final demand at the time of offer of possession. The buyer agrees to a variation of 20% in the area of the flat and the terms and conditions shall be read for the sale of the property with variation to the extent of 20%. Except as expressly stated, the Company/Firm, its promoters, partners/directors, employees/ associates/ nominees and agents make no express or implied warranties about the accuracy of the facilities mentioned herein. It is clarified that all the facilities and amenities in the project are not currently functional/ operational and are subject to completion of the project.



CONCEPT BY  
ACCLAIMED ARCHITECT

**Aedas**  
SINGAPORE

Aedas is one of the world's leading global architectural firms based in Singapore. The group offers services in architecture, Interior design, landscaping & building consultancy for mixed-use, commercial, retail, residential, hospitality & social infrastructure, as well as master planning and urban design within Asia, the Middle East, Europe and America.



BOULEVARD  
PLAZA, DUBAI



U-BORA TOWER,  
DUBAI



OCEAN HEIGHTS, DUBAI  
(DESIGNED BY ANDREW BROMBERG OF AEDAS)



THR350,  
Hong Kong



GRAMERCY,  
HONG KONG



FORTUNE CENTRE,  
XIAMEN, CHINA



CENTER 66, WUXI,  
CHINA



NAPIER,  
SINGAPORE





## DELIVERED PROJECT



## ONGOING PROJECTS



# Home & Soul

### Corporate office:

Tapasya Corporate Heights, Ground Floor, Sector -126, noida Expressway, Noida

**Contact No.:**  
0120-4287800, M. 99999-80055

**E-Mail:**  
info@homeandsoul.in

**Website:**  
www.homeandsoul.com

## Financed by: SWAMIH INVESTMENT FUND I

Sponsored by: Govt. of India | Investment Manager: SBICAP Ventures Ltd.

**DISCLAIMER:** RERA Registration Number(s) for F Premiere: UPRERAPRJ7115, UPRERAPRJ7173 and UPRERAPRJ7195 available at www.up-rera.in

**Disclaimer:** Any visitor on this website/ anyone using and accessing the brochure automatically agrees to comply with and be bound by the following terms and conditions of use. Visitors are presumed to have read, understood and agreed to terms and conditions of this brochure/ website. The developer can alter or revoke any terms or conditions of this website without notice. This is only an invitation to offer and does not constitute an offer. The purpose of this brochure/ booklet / prospectus/ advertisement/ website is, to indicate to the customers the extent of the amenities and facility that could come up (subject to the final layout) in the project as per the present approved layout. Any prospective sale shall strictly be governed by the terms and conditions of the agreement for sale to be entered into between the parties. The present invitation does not in any manner constitute a binding agreement or offer on the part of the company, the final layout, price and further terms and conditions shall only be in terms of the agreement for sale.

**Terms & Conditions:** In no event will the company and/or its group companies and/or its entities be liable for any loss or damages arising from the use of or reliance on information provided on this website/ in this brochure. The use of any information or material on this website/ in this brochure is entirely at the visitor's own risk. In case of contradiction between this information and the final agreement, the conditions of the final agreement alone shall be binding. The information on this website/ in this brochure does not constitute a legal offer and/or contract of any such type between us/the promoter and the visitor. The names, marks and copyrights in the artistic style in which they are represented herein either belong to, or are owned by or has been permitted to be used by the company. This website/ brochure contains material which is owned by or licensed by the company and is protected by copyright and intellectual property laws. Reproduction is prohibited without prior permission in writing. The company has the right to alter the information of this website/ brochure without obligation to communicate any changes. A visitor, by the act of submitting information through the website or email will be considered to warrant that he/she has provided true, accurate, current and complete information. By entering a mobile number, a visitor is considered to have consented to the company, to send alerts, promotional SMS and the permission to be contacted. The company shall make every effort to keep the website free of viruses and other harmful components but does not warrant the same. This website and emails from the company are vulnerable to data corruption, interception, tampering, viruses as well as delivery error and the visitor accepts the fact that the company shall not be liable for any consequences that may arise from them. The design, plans, specifications, facilities, images, features, etc. shown on this website/ in this brochure are only indicative and subject to the approval of the respective authorities. We/the promoter reserve the right to change these without any notice or objections. The company or any of its employees, managers or representatives shall not be responsible for any damage or economic loss arising out of or related to the use of the website/ brochure. The website may contain links to other websites which are not under the control of the company. Any such links may be accessed by the visitor and the company shall not be liable or responsible for the same. We/ the promoter reserves the right to change, alter, add or delete any of the specifications mentioned herein without prior permission or notice subject however to the applicable laws. Please note that www.homeandsoul.com is the only official website of Home & Soul infratech Pvt. Ltd. ("the company"). The public at large is hereby informed and advised not to refer to or rely on any information/data on any other unauthorized/unofficial websites having our logos / project details / brand name. You may choose to report any such unauthorized/unofficial websites to us on info@homeandsoul.in such that we can initiate necessary action against them. In addition, please check/ensure that you are dealing with our official "RERA registered" real estate agent only.