









Luxury is an embodiment of the ultimate quest for recognition in a human being and represents the fulfillment of the latent desire to stand- apart and be noticed. MAHAGUN understands that your home is your statement to the world and an announcement of who you are.

We believe that your home should be a reflection of your personality and individuality. A belief on which the villas, pent-houses, villaments, luxurious condominiums and floor of 'M Collection' are based upon.

All alluring combination of luxurious elegance, tailored to perfection for contemporary living, these are stately homes with flawless designs, graceful architecture and beautiful vistas that lend majesty and splendor to your lifestyle.

The ultimate definition of luxury- 'M Collection' homes from MAHAGUN Step into the ultra-luxurious condominiums that speak of luxury and indulgence. Live the royal life.



Step into the ultra-luxurious  
Condominiums that speak of luxury and  
indulgence. Live the royal life.

Hafeez Contractor  
Design Consultant

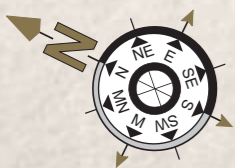
M  
COLLECTION  
BY MAHAGUN

THE M COLLECTION FROM MAHAGUN.

Imagine a magical world, a land where dreams come true. A land where you wake up in the morning, slip on your glass slippers, walk across the plush marble laid floor to step onto rolling green landscapes stretching as far as horizon. The elegant homes with flawless design, graceful architecture and beautiful vistas from the M Collection of Mahagun outdoes even your imagination. The epitome of fine living, these homes lend a touch of allure and charm to your lifestyle.

# Location Map

MAHAGUN  
**Manoriale**  
Sector - 128, Expressway, Noida



MAHAGUN  
**Manorialle**  
Sector - 128, Expressway, Noida



Artistic Image

Disclaimer: The image(s) displayed is only an artistic impression and purely conceptual and constitute no legal offering



# Site Plan



- |                                |                           |
|--------------------------------|---------------------------|
| 1. Drop off                    | 11. Fire Tender Path      |
| 2. Trellis Above Ramp          | 12. Amphitheater          |
| 3. Landscape Buffer            | 13. Water Feature         |
| 4. Artificial Berm             | 14. Kids Play Area        |
| 5. Decorative Planting         | 15. Lawn                  |
| 6. Pergola                     | 16. Seating               |
| 7. Tennis Court                | 17. Sculpture             |
| 8. Multi Purpose Play Lawn     | 18. Building Lobby Area   |
| 9. Landscape Berm and Planting | 19. Garden at Stilt Level |
| 10. Water Feature              |                           |

  
 MAHAGUN  
**Manorialle**  
 Sector - 128, Expressway, Noida





Come and experience  
the extravagant lifestyle  
at Manorialle

# Salient Features

- Manorialle is a sound investment on all counts. You experience premium luxury when you live in it, and you yield premium returns when you don't.
- 40 levels of unique architecture create an imposing structure that blends seamlessly into the illustrious neighborhood.
- The stunning views from your Condominium on your floor will set your pulse racing, while the extraordinary service will soothe your senses, and five elevators, (four passenger elevators & one service elevator) only at your service.
- This breathtaking community will be home to some of the most unseen marvels inspired by nature, with the utmost optimum utilization of natural light. Cleaner air, naturally cooler temperatures through insulated roofs at terrace level, eco-friendly interior features are just few of the many secrets.
- It's a masterpiece that isn't just architecturally accomplished. In fact, with a wide range of features like landscape irrigation systems backed by rain water harvesting; it's a way of life in perfect harmony with natural beauty that is both endearing and sustainable.
- Manorialle Offers 180 degree vistas over the golf course, with uninterrupted views. The generous dimensions allow them to be for entertaining, or simply relaxing and enjoying the feeling of air and space.
- Close to the city, yet away from the bustle. At the heart of nature, and with nature at the heart. Enjoy for the first time ever in Wishtown, a complete landscaped garden at the stilt floor, with neither cars- nor floors.
- At Manorialle, you will find that there are plenty of theme and Aroma Gardens you can escape to every single morning, through your Jogging track.
- Your Condominium is a signature of ultimate luxury. The 18 hole and 9 hole Championship Golf course promises to present a distinct and memorable golfing experience. This spectacular Golf Course is designed by Graham Cooke Architects.
- In a place like no other, where the past meets the future, the spectacular amphitheater will evoke the memories of Rome and Greece.
- Enclosed somewhere within the acres of sun-kissed grass and rich flora are luxury homes, built to perfection. Picturesque aroma and theme gardens and tranquil water streams along the jogging track remain standard accessories.
- When the sun comes out, keep your cool by just ambling across the lawns, where you're in for a refreshing splash with a cluster of water features.
- Serviced luxury takes a whole new meaning at Mahagun Manorialle. Be it a personal chauffeur by your side or a five-star chef in your kitchen; the dedicated concierge desk will make it happen.
- Manorialle Club brings together the luxuries of a five-star hotel with the homely comforts of family living. Imagine an early evening in the swimming pool, with your wife, as your kids are safe in the play areas.
- Even a relaxing moment in your infinity pool will be an inspiration.
- Glorious days, Dazzling nights! You are truly at the middle of it all, as you step onto your party lawn.
- Dedicated spaces for bicycles. It's all about living in harmony with nature in more ways than one.
- Take a dip in the infinity pool, and you'll feel like you're swimming on the top of the world. The vanishing edges merge the water with the sky and highlight the scenic surroundings. And the tranquil nature extends beyond the pools.
- Give your kids the day off. Your kids have a Kids Club, so you can go out knowing that your kids will have as good a time as you. And enjoy the best of family and city life in their play areas and swing gardens.
- Stretching the limits of design, love for the game will abound, far beyond the expected. Every level of skill will be honored. Every sense of occasion will be celebrated. Sporting legends bring their proven design expertise to breathe life into the stunning sports club, with multipurpose court, yet continue with, carom, card, billiards room, banquet hall, table tennis room, gym & spa, aerobics centre, library & children's play area.
- Your homes are equipped with pro- environment facilities like horticulture, rain water harvesting and many more eco- conscious innovations to ensure a healthy lifestyle for you and your loved ones.
- The powerful air conditioning will make your day as you come home after a long and tiring day from work.
- What is better than the feeling of peace and safety. Relax while your loved ones are taken care of by the 3 tier international standard security system, with CCTV, and Visual Colour entry system.
- A world-class community must be complemented by world-class educational institutions. Manorialle is close to some of the best names in education; just so you can see your kids get a great start. Step-By-Step, Mother's Pride, Pathways, Lotus Valley, Jaypee School, Amity University are a few of the many Educational institutes around your house.
- Just a short drive from the heart of the National Capital-Delhi, and yet feels like a world away. Take the Noida Expressway and find yourself at the gates of Manorialle within 25 minutes. The strategic location allows easy access to arterial road networks that put the city within easy reach.



# WHITEHALL PALACE & WESTMINSTER PALACE

## CONDOMINIUM - 1 (3 BHK)

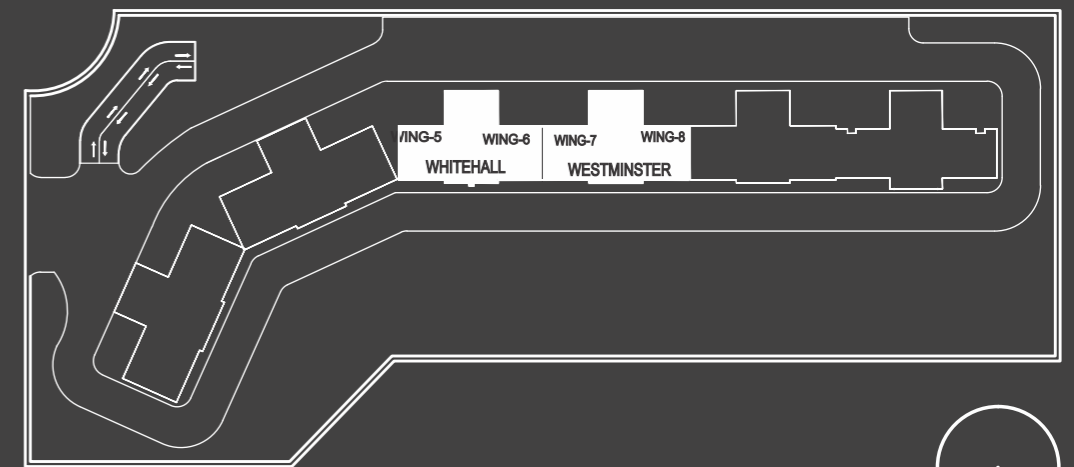
Super Area - 251 Sq. mtr./ 2700 Sq. ft.  
 Built-up Area - 180 Sq. mtr./ 1940 Sq. ft.  
 Carpet Area - 130 Sq. mtr./ 1401 Sq. ft.  
 Balcony Area - 32.9 Sq. mtr./ 355 Sq. ft.  
 Wing - 5 (Whitehall Palace) &  
 Floors - 1, 2, 5, 6, 9, 10, 14, 15, 18, 19  
 Wing - 6 (Whitehall Palace)  
 Floors - 3, 4, 7, 8, 11, 12, 16, 17, 20, 21  
 Wing - 7 (Westminster Palace)  
 Floors - 3, 4, 7, 8, 11, 12, 16, 17, 20, 21  
 Wing - 8 (Westminster Palace)  
 Floors - 1, 2, 5, 6, 9, 10, 14, 15, 18, 19

3 Bedrooms, 3 Toilets, 1 Powder Room, Dining - Family Lounge,  
 Living Room, Kitchen, Str Room With Toilet, Balconies

## CONDOMINIUM - 1 A (3 BHK)

Super Area - 265 Sq. mtr./ 2850 Sq. ft.  
 Built-up Area - 194 Sq. mtr./ 2090 Sq. ft.  
 Carpet Area - 130 Sq. mtr./ 1401 Sq. ft.  
 Balcony Area - 40.4 Sq. mtr./ 435 Sq. ft.  
 Wing - 5 (Whitehall Palace)  
 Floors - 3, 4, 7, 8, 11, 12, 16, 17, 20, 21  
 Wing - 6 (Whitehall Palace)  
 Floors - 2, 5, 6, 9, 10, 14, 15, 18, 19  
 Wing - 7 (Westminster Palace)  
 Floors - 2, 5, 6, 9, 10, 14, 15, 18, 19  
 Wing - 8 (Westminster Palace)  
 Floors - 3, 4, 7, 8, 11, 12, 16, 17, 20, 21

3 Bedrooms, 3 Toilets, 1 Powder Room, Dining- Family Lounge,  
 Living Room, Kitchen, Str Room With Toilet, Balconies

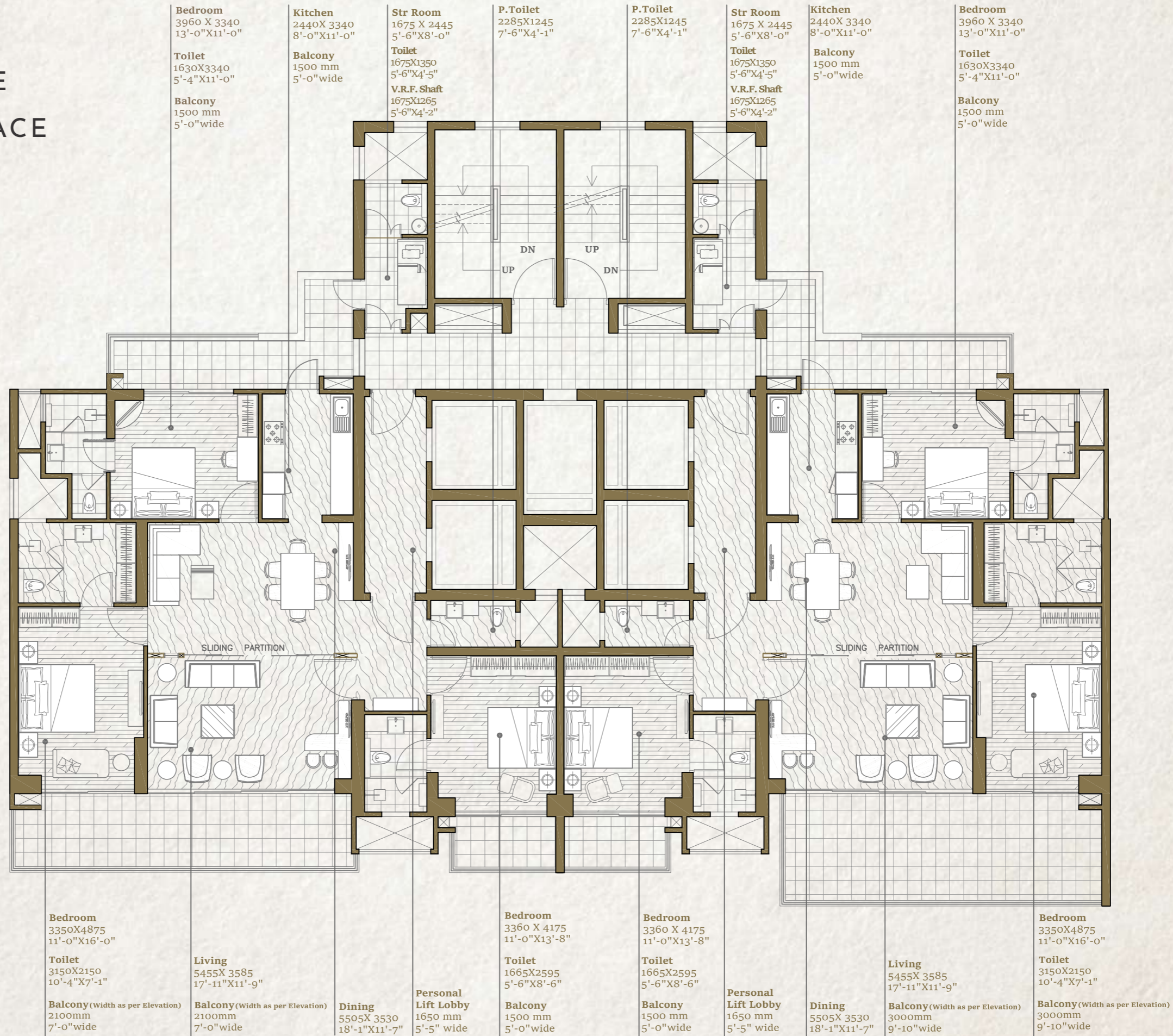


Key Plan

### Disclaimer:

1. The depiction of images of layout and features as mentioned above are based on artistic impression. The customers are advised to check and re-verify the layout and features as mentioned from the website of RERA and/or from the office of the Developer. 1 Sq mtr. = 10.764 sq. ft. The dimensions are from the unfinished walls (including skirting thickness). All Dimension are from the unfinished walls.  
 2. Due to Vastu reasons, thirteen floor shall be read as fourteen floor and thereafter, fourteen floor and above shall be read and start from fifteen floor so on till last floor".

# WHITEHALL PALACE & WESTMINSTER PALACE



1. The depiction of images of layout and features as mentioned above are based on artistic impression. The customers are advised to check and re-verify the layout and features as mentioned from the website of RERA and/or from the office of the Developer. 1Sq mtr. = 10.764 sq. ft.  
The dimensions are from the unfinished walls (including skirting thickness).

2. Due to Vastu reasons, thirteen floor shall be read as fourteen floor and thereafter, fourteen floor and above shall be read and start from fifteen floor so on till last floor.



# WESTMINSTER PALACE

## CONDOMINIUM - 1 B (3 BHK)

Super Area - 251 Sq. mtr./ 2700 Sq. ft.  
Built-up Area - 180 Sq. mtr./ 1940 Sq. ft.  
Carpet Area - 131.73 Sq. mtr./ 1418 Sq. ft.  
Balcony Area - 32.9 Sq. mtr./ 355 Sq. ft.

Wing - 7 (Westminster Palace)  
Floors - 24, 25, 28, 29, 32, 33, 36, 37  
Wing - 8 (Westminster Palace)  
Floors - 22, 23, 26, 27, 30, 31, 34, 35

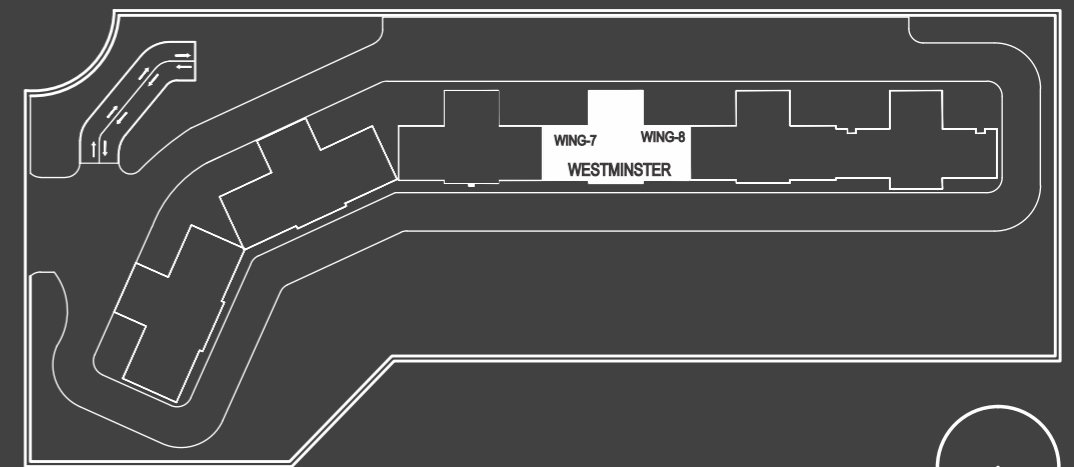
3 Bedrooms, 3 Toilets, Dining - Family Lounge,  
Living Room, Powder Room, Kitchen, Str Room With Toilet,  
Balconies

## CONDOMINIUM - 1 C (3 BHK)

Super Area - 265 Sq. mtr./ 2850 Sq. ft.  
Built-up Area - 194 Sq. mtr./ 2090 Sq. ft.  
Carpet Area - 131.73 Sq. mtr./ 1418 Sq. ft.  
Balcony Area - 40.4 Sq. mtr./ 435 Sq. ft.

Wing - 7 (Westminster Palace)  
Floors - 22, 23, 26, 27, 30, 31, 34, 35  
Wing - 8 (Westminster Palace)  
Floors - 24, 25, 28, 29, 32, 33, 36, 37

3 Bedrooms, 3 Toilets, Dining- Family Lounge,  
Living Room, Powder Room, Kitchen,  
Str Room With Toilet, Balconies

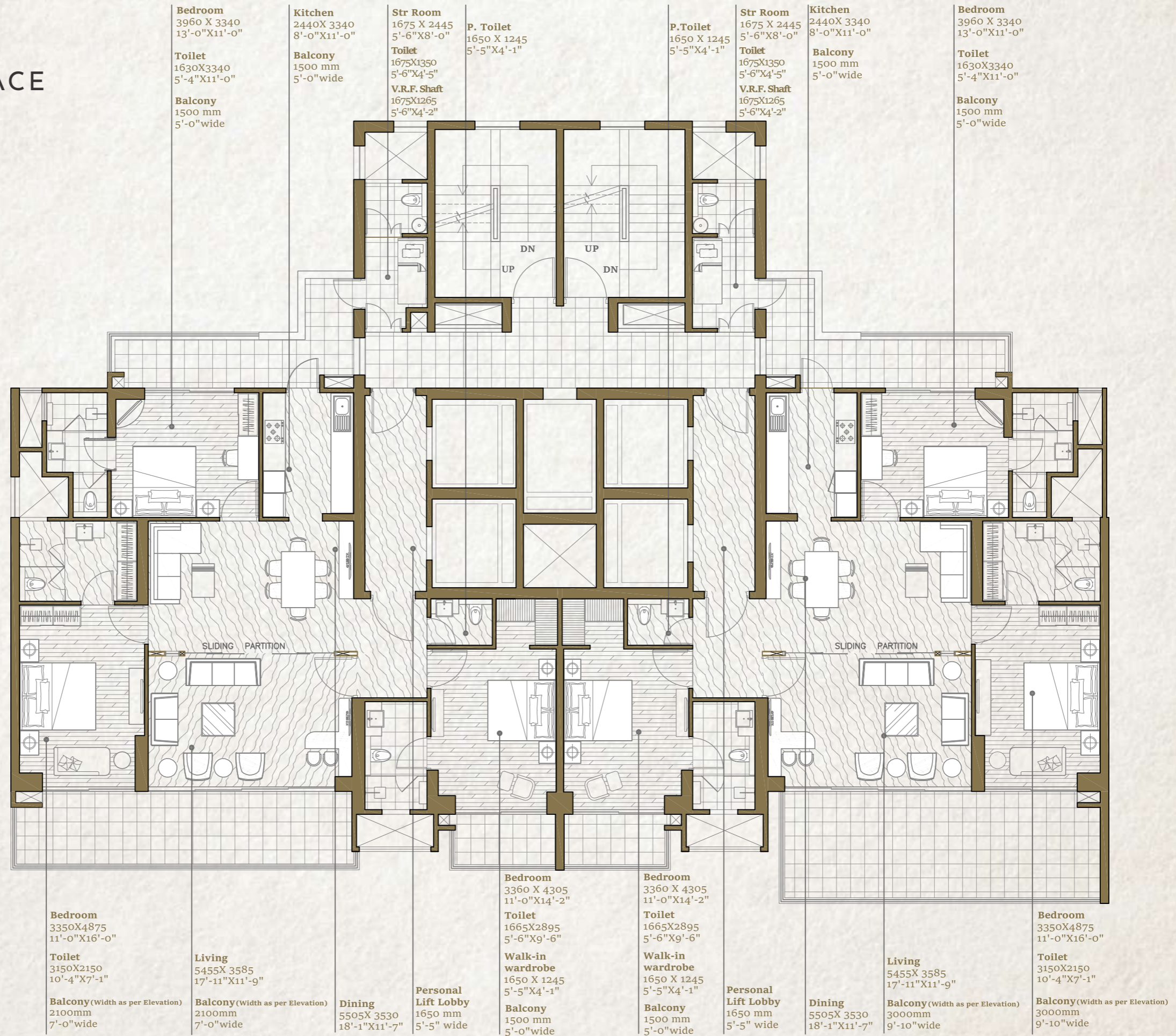


Key Plan

### Disclaimer:

1. The depiction of images of layout and features as mentioned above are based on artistic impression. The customers are advised to check and re-verify the layout and features as mentioned from the website of RERA and/or from the office of the Developer. 1 Sq mtr. = 10.764 sq. ft. The dimensions are from the unfinished walls (including skirting thickness). All Dimension are from the unfinished walls.
2. Due to Vastu reasons, thirteen floor shall be read as fourteen floor and thereafter, fourteen floor and above shall be read and start from fifteen floor so on till last floor.

WESTMINSTER PALACE



1. The depiction of images of layout and features as mentioned above are based on artistic impression. The customers are advised to check and re-verify the layout and features as mentioned from the website of RERA and/or from the office of the Developer. 1Sq mtr. = 10.764 sq. ft.  
 The dimensions are from the unfinished walls (including skirting thickness).

2. Due to Vastu reasons, thirteen floor shall be read as fourteen floor and thereafter, fourteen floor and above shall be read and start from fifteen floor so on till last floor.



# BRIDEWELL PALACE

## CONDOMINIUM - 2F (4 BHK)

Super Area - 322 Sq. mtr./ 3465 Sq. ft.  
Built-up Area - 250 Sq. mtr./ 2690 Sq. ft.  
Carpet Area - 175 Sq. mtr./ 1878 Sq. ft.  
Balcony Area - 44.7 Sq. mtr./ 481 Sq. ft.

Wing - 3 (Bridewell Palace)  
Floors -2, 5, 6, 9, 10, 14, 15, 18, 19

Wing - 4 (Bridewell Palace)  
Floors -3, 4, 7, 8, 11, 12, 16, 17, 20, 21

4 Bedrooms, 4 Toilets, 1 Powder Room, Dining- Family Lounge, Living Room, Kitchen, STR Room with Toilet , Balconies

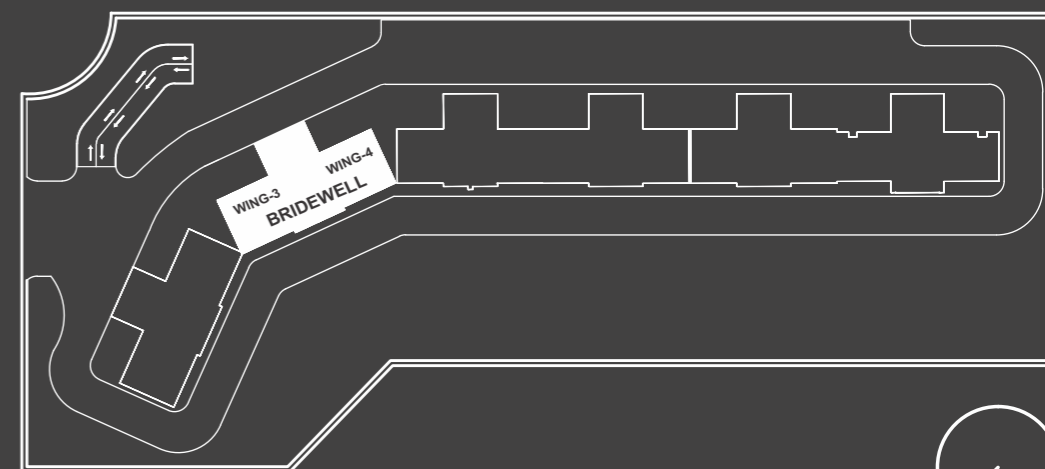
## CONDOMINIUM - 2G (4 BHK)

Super Area - 309 Sq. mtr./ 3325 Sq. ft.  
Built-up Area - 237 Sq. mtr./ 2550 Sq. ft.  
Carpet Area - 175 Sq. mtr./ 1878 Sq. ft.  
Balcony Area - 38 Sq. mtr./ 409 Sq. ft.

Wing - 4 (Bridewell Palace)  
Floors -1, 2, 5, 6, 9, 10, 14, 15, 18, 19

Wing - 3 (Bridewell Palace)  
Floors -3, 4, 7, 8, 11, 12, 16, 17, 20, 21

4 Bedrooms, 3 Toilets, 1 Powder Room, Dining- Family Lounge, Living Room, Kitchen, STR Room with Toilet , Balconies



Key Plan

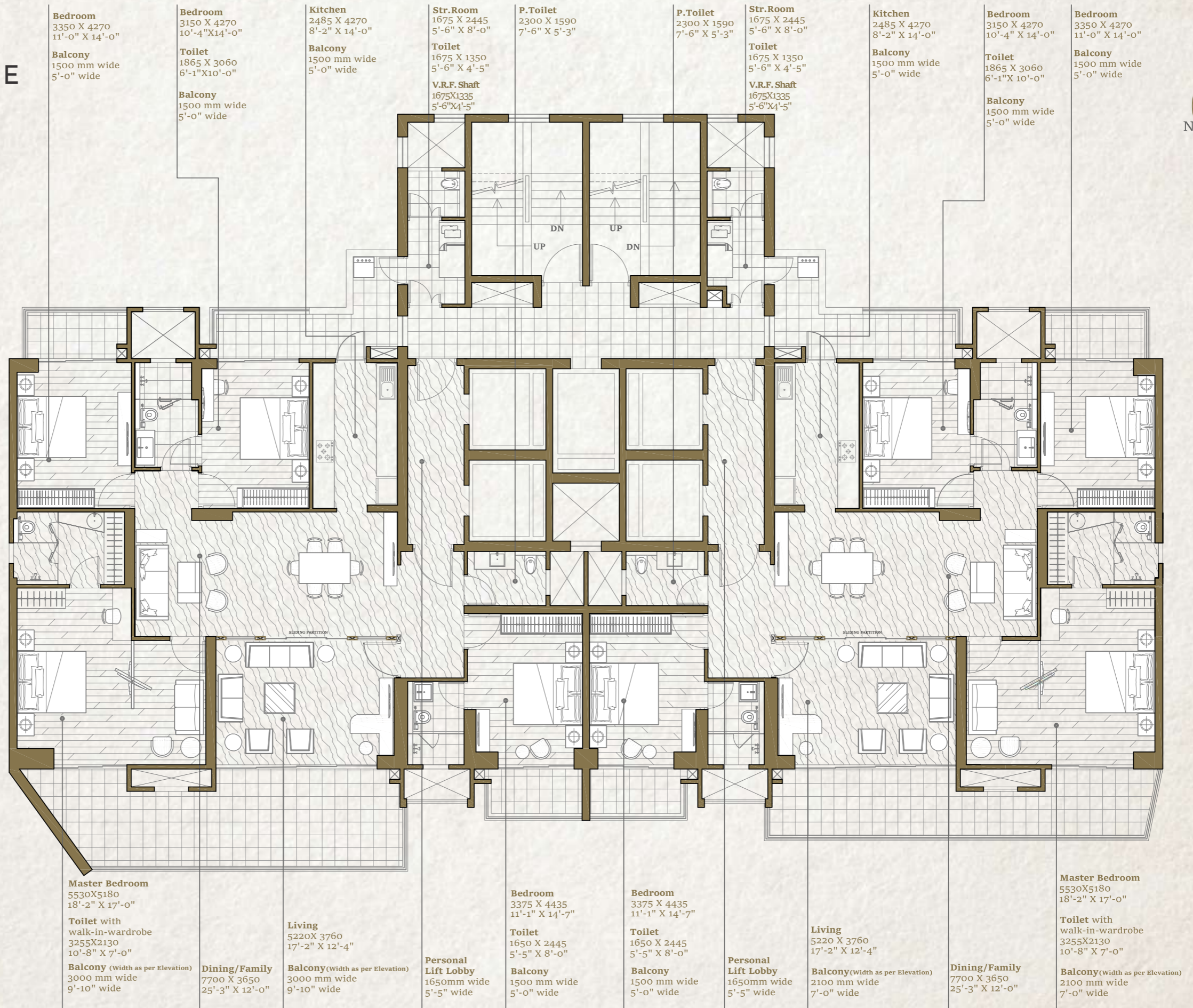
### Disclaimer:

1. The depiction of images of layout and features as mentioned above are based on artistic impression. The customers are advised to check and re-verify the layout and features as mentioned from the website of RERA and/or from the office of the Developer. 1 Sq mtr. = 10.764 sq. ft. The dimensions are from the unfinished walls (including skirting thickness). All Dimension are from the unfinished walls.

2. Due to Vastu reasons, thirteen floor shall be read as fourteen floor and thereafter, fourteen floor and above shall be read and start from fifteen floor so on till last floor.



BRIDEWELL PALACE



1. The depiction of images of layout and features as mentioned above are based on artistic impression. The customers are advised to check and re-verify the layout and features as mentioned from the website of RERA and/or from the office of the Developer. 1Sq mtr. = 10.764 sq. ft.  
 The dimensions are from the unfinished walls (including skirting thickness).

2. Due to Vastu reasons, thirteen floor shall be read as fourteen floor and thereafter, fourteen floor and above shall be read and start from fifteen floor so on till last floor.



# BRIDEWELL PALACE

## CONDOMINIUM - 2D (4 BHK)

Super Area - 322 Sq. mtr./ 3465 Sq. ft.  
Built-up Area - 250 Sq. mtr./ 2690 Sq. ft.  
Carpet Area - 176.04 Sq. mtr./ 1895 Sq. ft.  
Balcony Area - 44.7 Sq. mtr./ 481 Sq. ft.

Wing - 3 (Bridewell Palace)  
Floors -22, 23, 26, 27, 30, 31, 34, 35  
Wing - 4 (Bridewell Palace)  
Floors - 24, 25, 28, 29, 32, 33

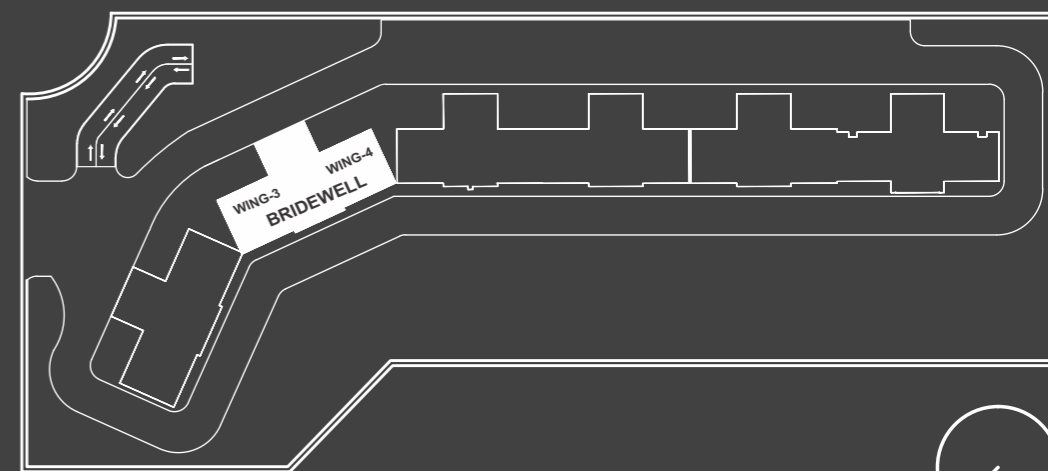
4 Bedrooms, 4 Toilets, Dining- Family Lounge,  
Living Room, Powder Room, Kitchen, STR Room with Toilet,  
Balconies

## CONDOMINIUM - 2E (4 BHK)

Super Area - 309 Sq. mtr./ 3325 Sq. ft.  
Built-up Area - 237 Sq. mtr./ 2550 Sq. ft.  
Carpet Area - 176.04 Sq. mtr./ 1895 Sq. ft.  
Balcony Area - 38 Sq. mtr./ 409 Sq. ft.

Wing - 4 (Bridewell Palace)  
Floors -22, 23, 26, 27, 30, 31, 34, 35  
Wing - 3 Bridewell Palace)  
Floors - 24, 25, 28, 29, 32, 33

4 Bedrooms, 3 Toilets, Dining- Family Lounge,  
Living Room, Powder Room, Kitchen,  
STR Room with Toilet , Balconies



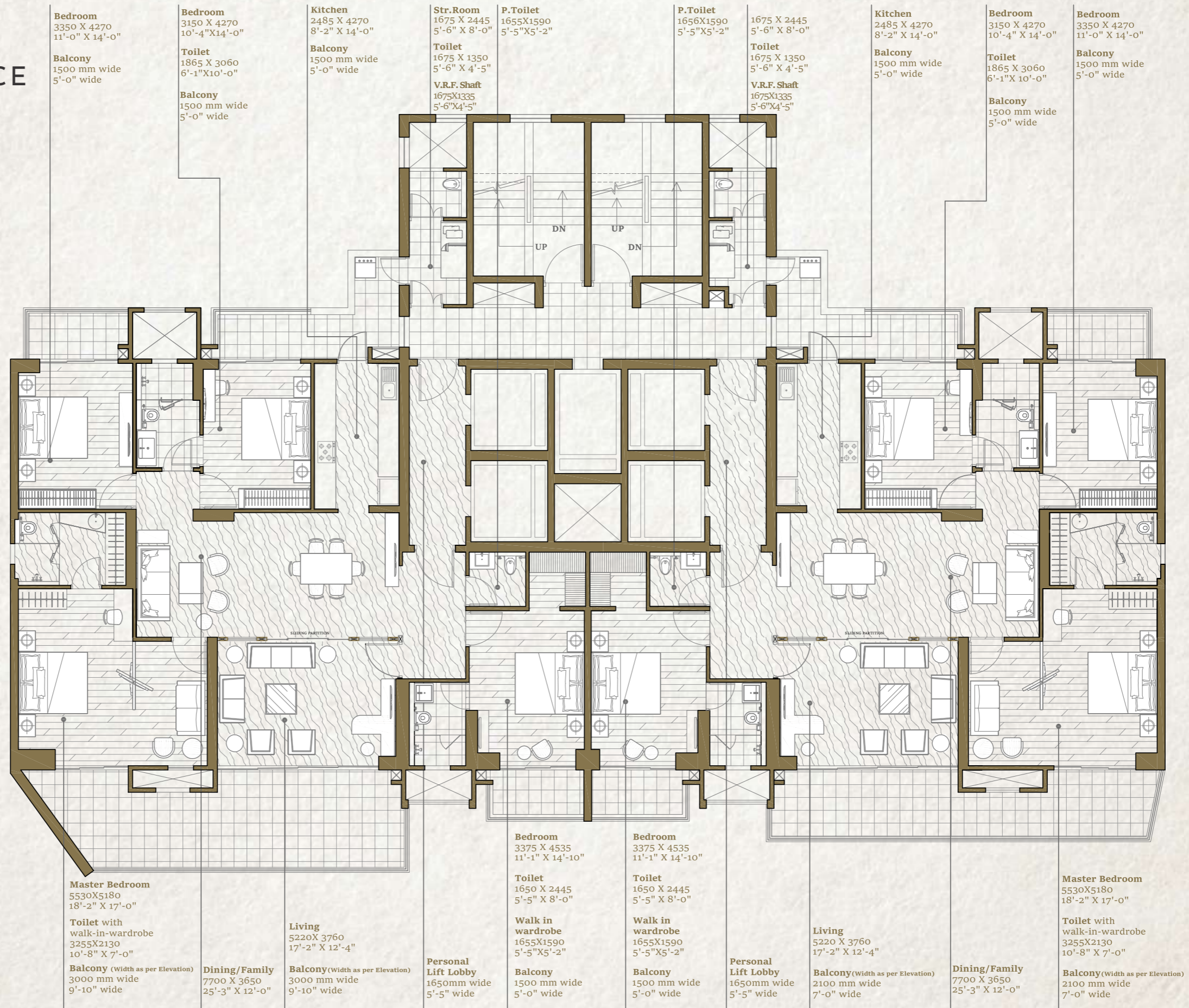
Key Plan

### Disclaimer:

1. The depiction of images of layout and features as mentioned above are based on artistic impression. The customers are advised to check and re-verify the layout and features as mentioned from the website of RERA and/or from the office of the Developer. 1 Sq mtr. = 10.764 sq. ft. The dimensions are from the unfinished walls (including skirting thickness). All Dimension are from the unfinished walls.

2. Due to Vastu reasons, thirteen floor shall be read as fourteen floor and thereafter, fourteen floor and above shall be read and start from fifteen floor so on till last floor.

BRIDEWELL PALACE



1. The depiction of images of layout and features as mentioned above are based on artistic impression. The customers are advised to check and re-verify the layout and features as mentioned from the website of RERA and/or from the office of the Developer. 1Sq mtr. = 10.764 sq. ft. The dimensions are from the unfinished walls (including skirting thickness).

2. Due to Vastu reasons, thirteen floor shall be read as fourteen floor and thereafter, fourteen floor and above shall be read and start from fifteen floor so on till last floor.



# RICHMOND PALACE

## CONDOMINIUM - 2 C (4 BHK)

Super Area - 332 Sq. mtr./ 3575 Sq. ft.  
 Built-up Area - 259 Sq. mtr./ 2790 Sq. ft.  
 Carpet Area - 192 Sq. mtr./ 2071 Sq. ft.  
 Balcony Area - 38.09 Sq. mtr./ 410 Sq. ft.  
 Wing - 1 (Richmond Palace)  
 Floors - 1, 2, 5, 6, 9, 10, 14, 15, 18, 19

Super Area- 350.7 Sq.mtr./ 3775 Sq.ft.  
 Built-up Area - 269.41 Sq.mtr./ 2900 Sq.ft.  
 Carpet Area - 192.40 Sq. mtr./ 2071 Sq. ft.  
 Balcony Area - 48.95 Sq. mtr./ 527 Sq. ft.  
 Wing - 1 (Richmond Palace)  
 Floors - 3, 4, 7, 8, 11, 12, 16, 17, 20, 21

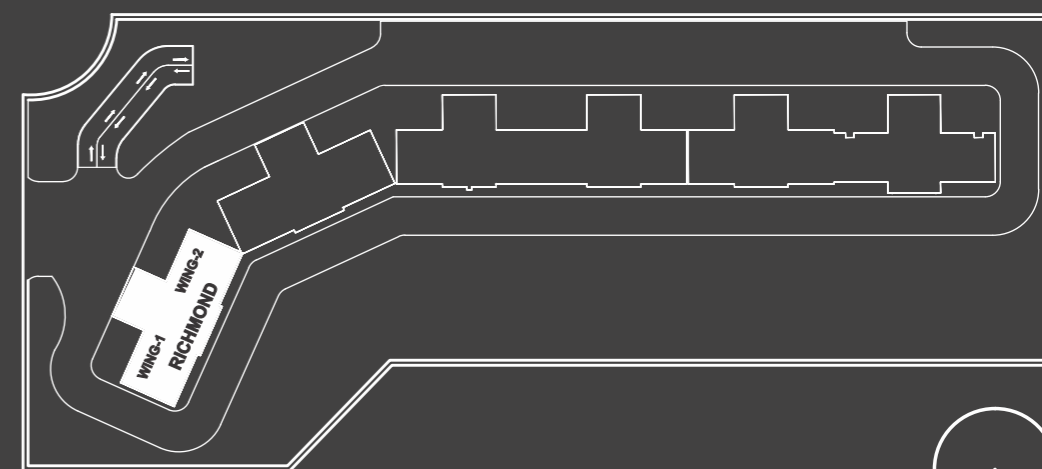
4 Bedrooms, 3 Toilets, 1 Powder Toilet, Dining / Family, Kitchen  
 Living room, STR Room with Toilet, Balconies

## CONDOMINIUM - 2 A (4 BHK)

Super Area - 322 Sq. mtr./ 3465 Sq. ft.  
 Built-up Area - 250 Sq. Mtr./ 2690 Sq. ft.  
 Carpet Area - 176.42 Sq. mtr./ 1899 Sq. ft.  
 Balcony Area - 45.33 Sq. mtr./ 488 Sq. ft.  
 Wing - 2 (Richmond Palace)  
 Floors - 1, 2, 5, 6, 9, 10, 14, 15, 18, 19

Super Area - 309 Sq. mtr./ 3325 Sq. ft.  
 Built-up Area - 237 Sq. Mtr./ 2550 Sq. ft.  
 Carpet Area - 176.42 Sq. mtr./ 1899 Sq. ft.  
 Balcony Area - 36.69 Sq. mtr./ 395 Sq. ft.  
 Wing - 2 (Richmond Palace)  
 Floors - 3, 4, 7, 8, 11, 12, 16, 17, 20, 21

4 Bedrooms, 3 Toilets, 1 Powder Toilet, Dining / Family, Kitchen  
 Living room, STR Room with Toilet, Balconies



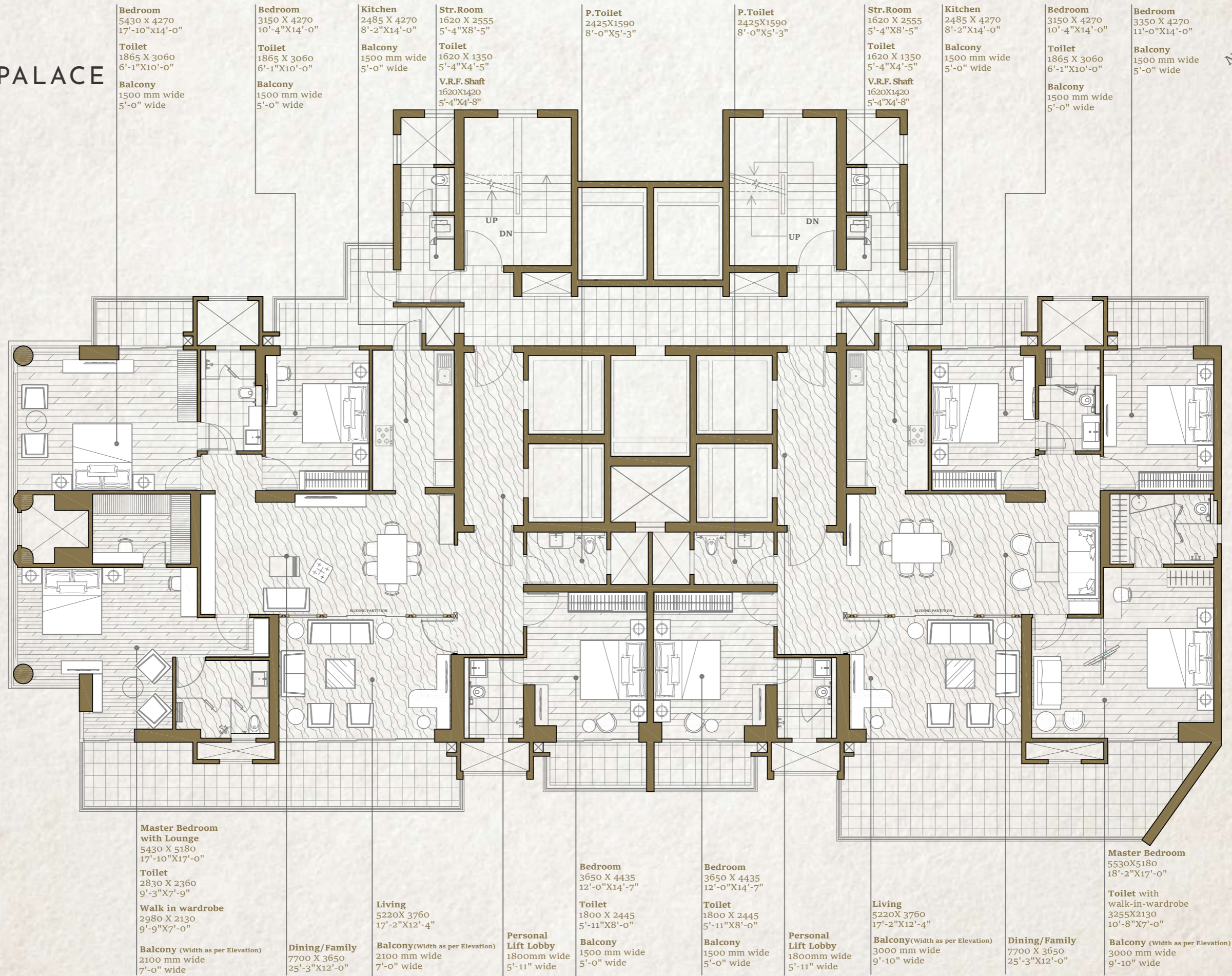
## Key Plan

### Disclaimer:

1. The depiction of images of layout and features as mentioned above are based on artistic impression. The customers are advised to check and re-verify the layout and features as mentioned from the website of RERA and/or from the office of the Developer. 1 Sq mtr. = 10.764 sq. ft. The dimensions are from the unfinished walls (including skirting thickness). All Dimension are from the unfinished walls.

2. Due to Vastu reasons, thirteen floor shall be read as fourteen floor and thereafter, fourteen floor and above shall be read and start from fifteen floor so on till last floor.

# RICHMOND PALACE



1. The depiction of images of layout and features as mentioned above are based on artistic impression. The customers are advised to check and re-verify the layout and features as mentioned from the website of RERA and/or from the office of the Developer. 1Sq mtr. = 10.764 sq. ft.  
 The dimensions are from the unfinished walls (including skirting thickness).

2. Due to Vastu reasons, thirteen floor shall be read as fourteen floor and thereafter, fourteen floor and above shall be read and start from fifteen floor so on till last floor.



# RICHMOND PALACE

## CONDOMINIUM - 2 (4 BHK)

Super Area - 332 Sq. mtr./ 3575 Sq. ft.  
 Built-up Area - 259 Sq. mtr./ 2790 Sq. ft.  
 Carpet Area - 194.35 Sq. mtr./ 2092 Sq. ft.  
 Balcony Area - 38.09 Sq. mtr./ 410 Sq. ft.  
 Wing - 1 (Richmond Palace)  
 Floors - 22, 23, 26, 27, 30, 31, 34, 35

Super Area- 350.7 Sq.mtr./ 3775 Sq.ft.  
 Built-up Area - 269.41 Sq.mtr./ 2900 Sq.ft.  
 Carpet Area - 194.35 Sq. mtr./ 2092 Sq. ft.  
 Balcony Area - 48.95 Sq. mtr./ 527 Sq. ft.  
 Wing - 1 (Richmond Palace)  
 Floors - 24, 25, 28, 29, 32, 33

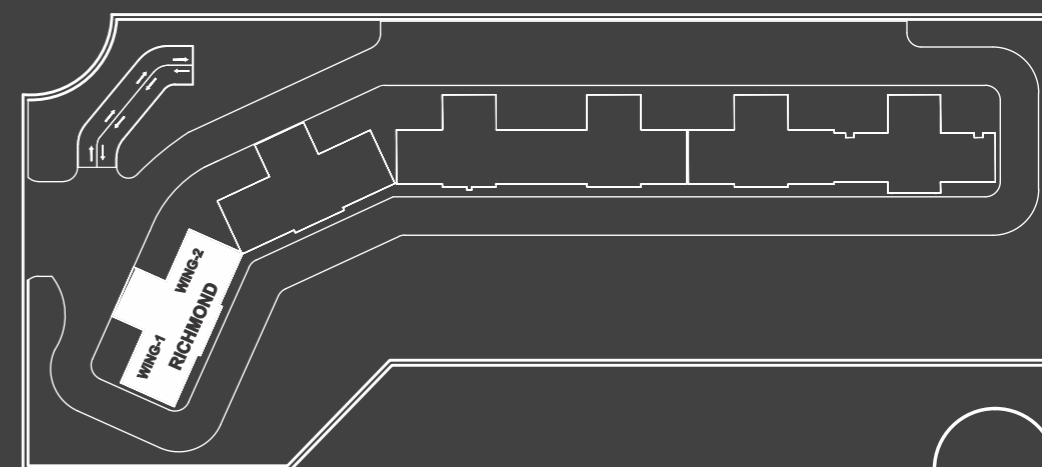
4 Bedrooms, 3 Toilets, Dining / Family, Kitchen  
 Living room, STR Room with Toilet, Balconies

## CONDOMINIUM - 2 B (4 BHK)

Super Area - 322 Sq. mtr./ 3465 Sq. ft.  
 Built-up Area - 250 Sq. Mtr./ 2690 Sq. ft.  
 Carpet Area - 178.37 Sq. mtr./ 1920 Sq. ft.  
 Balcony Area - 45.33 Sq. mtr./ 488 Sq. ft.  
 Wing - 2 (Richmond Palace)  
 Floors - 22, 23, 26, 27, 30, 31, 34, 35

Super Area - 309 Sq. mtr./ 3325 Sq. ft.  
 Built-up Area - 237 Sq. Mtr./ 2550 Sq. ft.  
 Carpet Area - 178.37 Sq. mtr./ 1920 Sq. ft.  
 Balcony Area - 36.69 Sq. mtr./ 395 Sq. ft.  
 Wing - 2 (Richmond Palace)  
 Floors - 24, 25, 28, 29, 32, 33

4 Bedrooms, 3 Toilets, Dining / Family, Kitchen  
 Living room, STR Room with Toilet, Balconies



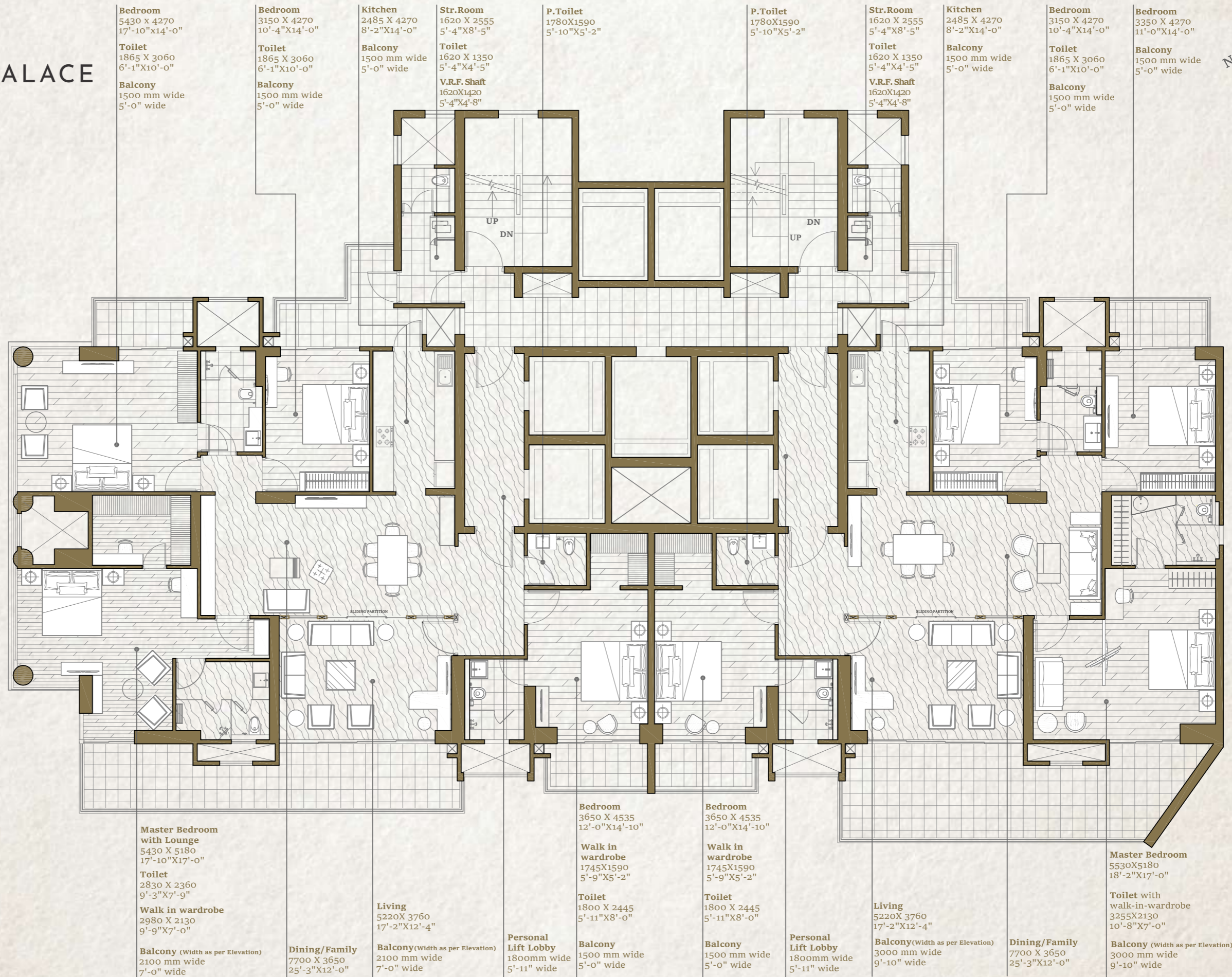
## Key Plan

### Disclaimer:

1. The depiction of images of layout and features as mentioned above are based on artistic impression. The customers are advised to check and re-verify the layout and features as mentioned from the website of RERA and/or from the office of the Developer. 1 Sq mtr. = 10.764 sq. ft. The dimensions are from the unfinished walls (including skirting thickness). All Dimension are from the unfinished walls.

2. Due to Vastu reasons, thirteen floor shall be read as fourteen floor and thereafter, fourteen floor and above shall be read and start from fifteen floor so on till last floor.

RICHMOND PALACE



1. The depiction of images of layout and features as mentioned above are based on artistic impression. The customers are advised to check and re-verify the layout and features as mentioned from the website of RERA and/or from the office of the Developer. 1Sq mtr. = 10.764 sq. ft.  
 The dimensions are from the unfinished walls (including skirting thickness).

2. Due to Vastu reasons, thirteen floor shall be read as fourteen floor and thereafter, fourteen floor and above shall be read and start from fifteen floor so on till last floor.



# BUCKINGHAM PALACE

CONDOMINIUM - 3 (4 BHK)

Super Area - 581 Sq. mtr./ 6250 Sq. ft.

Built-up Area - 459 Sq. mtr./ 4950 Sq. ft.

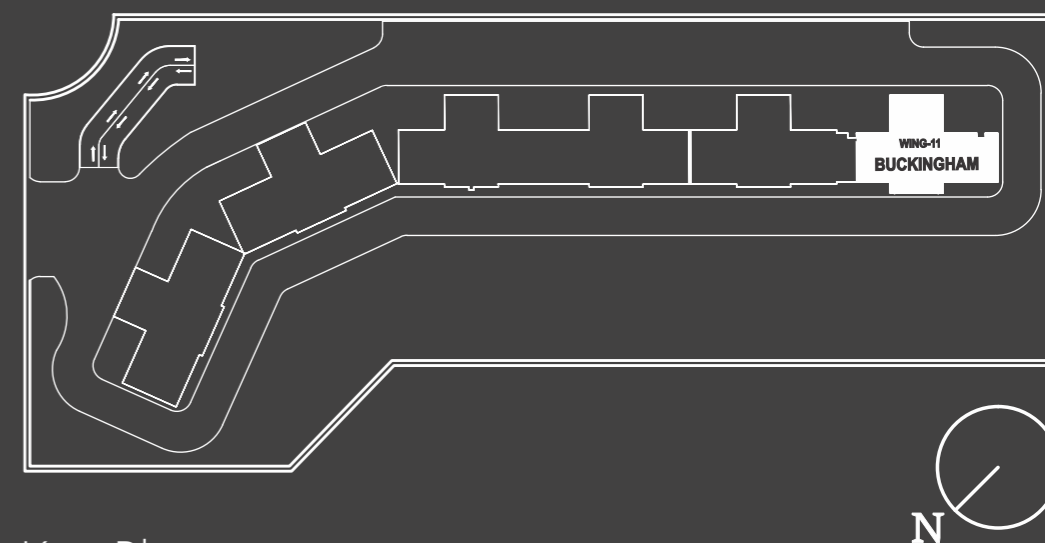
Carpet Area - 328 Sq. mtr./ 3530 Sq. ft.

Balcony Area - 81.47 sq. mtr./ 877 sq. ft.

Wing-11 (Buckingham Palace)

Floors - 2, 5, 6, 9, 10, 14, 15, 18, 19, 22, 23, 26, 27, 30, 31, 34, 35, 38, 39

5 Bedrooms, 5 Toilets, 1 Powder Toilet, Formal Living Room / Dining,  
Family Lounge / Dining, Lounge / Guest Bedroom, Kitchen, utility, STR Room with Toilet, Balconies



Key Plan

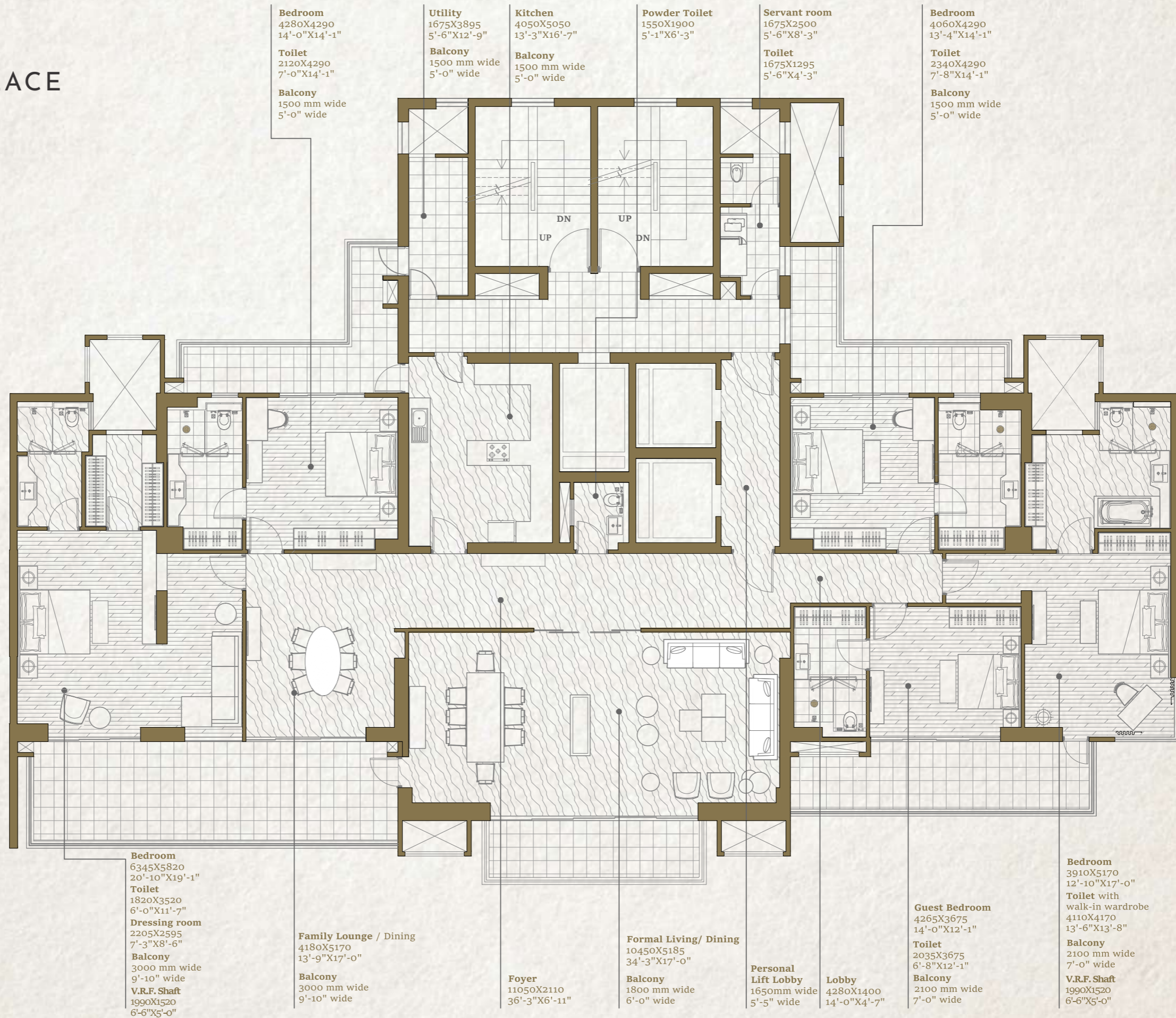
**Disclaimer:**

1. The depiction of images of layout and features as mentioned above are based on artistic impression. The customers are advised to check and re-verify the layout and features as mentioned from the website of RERA and/or from the office of the Developer. 1 Sq mtr. = 10.764 sq. ft. The dimensions are from the unfinished walls (including skirting thickness). All Dimension are from the unfinished walls.

2. Due to Vastu reasons, thirteen floor shall be read as fourteen floor and thereafter, fourteen floor and above shall be read and start from fifteen floor so on till last floor.



# BUCKINGHAM PALACE



1. The depiction of images of layout and features as mentioned above are based on artistic impression. The customers are advised to check and re-verify the layout and features as mentioned from the website of RERA and/or from the office of the Developer. 1Sq mtr. = 10.764 sq. ft.  
The dimensions are from the unfinished walls (including skirting thickness).

2. Due to Vastu reasons, thirteen floor shall be read as fourteen floor and thereafter, fourteen floor and above shall be read and start from fifteen floor so on till last floor.



# BUCKINGHAM PALACE

CONDOMINIUM - 3 (4 BHK)

Super Area - 581 Sq. mtr./ 6250 Sq. ft.

Built-up Area - 459 Sq. mtr./ 4950 Sq. ft.

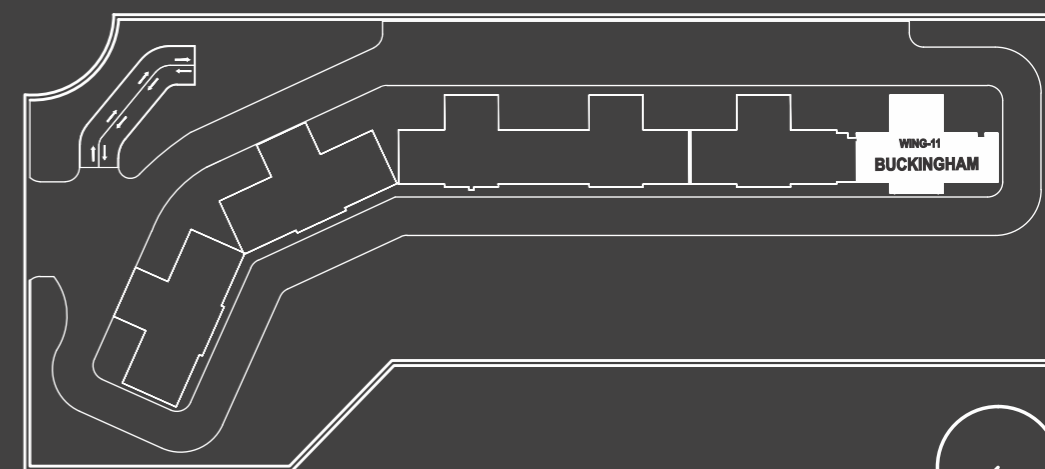
Carpet Area - 328 Sq. mtr./ 3530 Sq. ft.

Balcony Area - 80.08 Sq. mtr./ 862 Sq. ft.

Wing-11 (Buckingham Palace)

Floors - 3, 4, 7, 8, 11, 12, 16, 17, 20, 21, 24, 25, 28, 29, 32, 33, 36, 37

5 Bedrooms, 5 Toilets, 1 Powder Toilet, Formal Living Room / Dining,  
Family Lounge / Dining, Lounge / Guest Bedroom, Kitchen, utility, STR Room with Toilet, Balconies



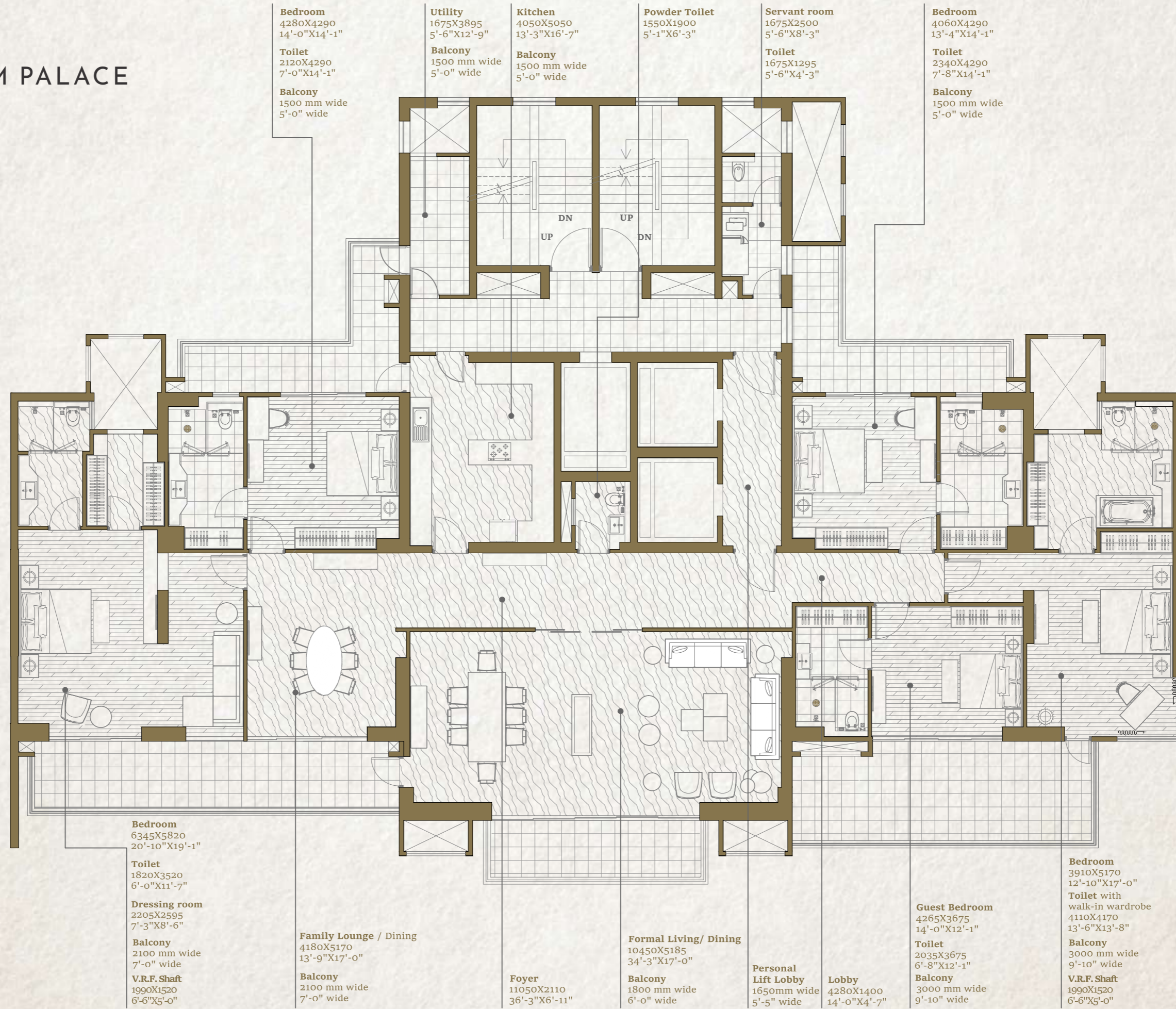
Key Plan

**Disclaimer:**

1. The depiction of images of layout and features as mentioned above are based on artistic impression. The customers are advised to check and re-verify the layout and features as mentioned from the website of RERA and/or from the office of the Developer. 1 Sq mtr. = 10.764 sq. ft. The dimensions are from the unfinished walls (including skirting thickness). All Dimension are from the unfinished walls.

2. Due to Vastu reasons, thirteen floor shall be read as fourteen floor and thereafter, fourteen floor and above shall be read and start from fifteen floor so on till last floor.

# BUCKINGHAM PALACE



1. The depiction of images of layout and features as mentioned above are based on artistic impression. The customers are advised to check and re-verify the layout and features as mentioned from the website of RERA and/or from the office of the Developer. 1Sq mtr. = 10.764 sq. ft.  
The dimensions are from the unfinished walls (including skirting thickness).

2. Due to Vastu reasons, thirteen floor shall be read as fourteen floor and thereafter, fourteen floor and above shall be read and start from fifteen floor so on till last floor.

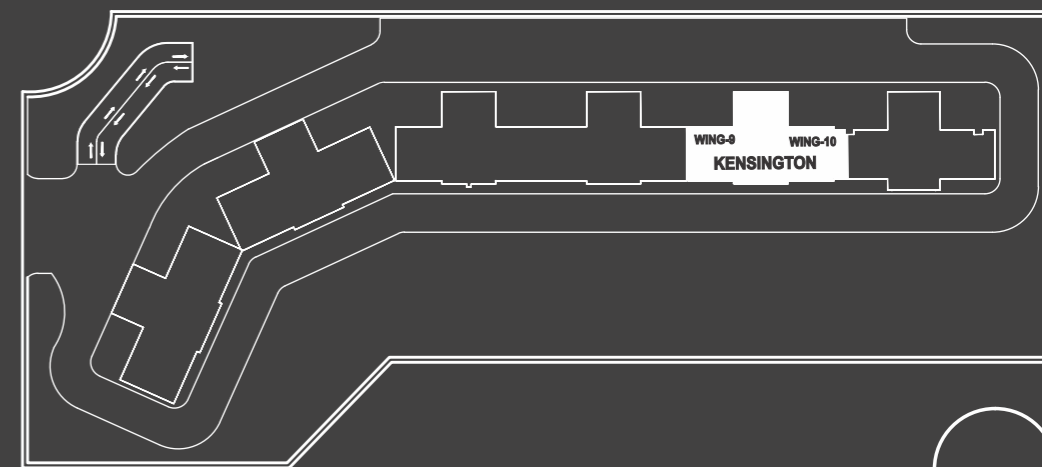


# KENSINGTON PALACE

## CONDOMINIUM - 3A (4 BHK)

Super Area - 581 Sq. mtr./ 6250 Sq. ft.  
 Built-up Area - 459 Sq. mtr./ 4950 Sq. ft.  
 Carpet Area - 328.47 Sq. mtr./ 3535 Sq. ft.  
 Balcony Area - 86.02 Sq. mtr./ 926 Sq. ft.  
 Wing - 9 & 10 (Kensington Palace)  
 Floors - 18, 19, 22, 23, 26, 27, 30, 31, 34, 35

5 Bedrooms, 5 Toilets, 1 Powder Toilet, Formal Living Room / Dining  
 Family Lounge / Dining, Lounge / Guest Bedroom, Kitchen, utility, STR Room with Toilet, Balconies



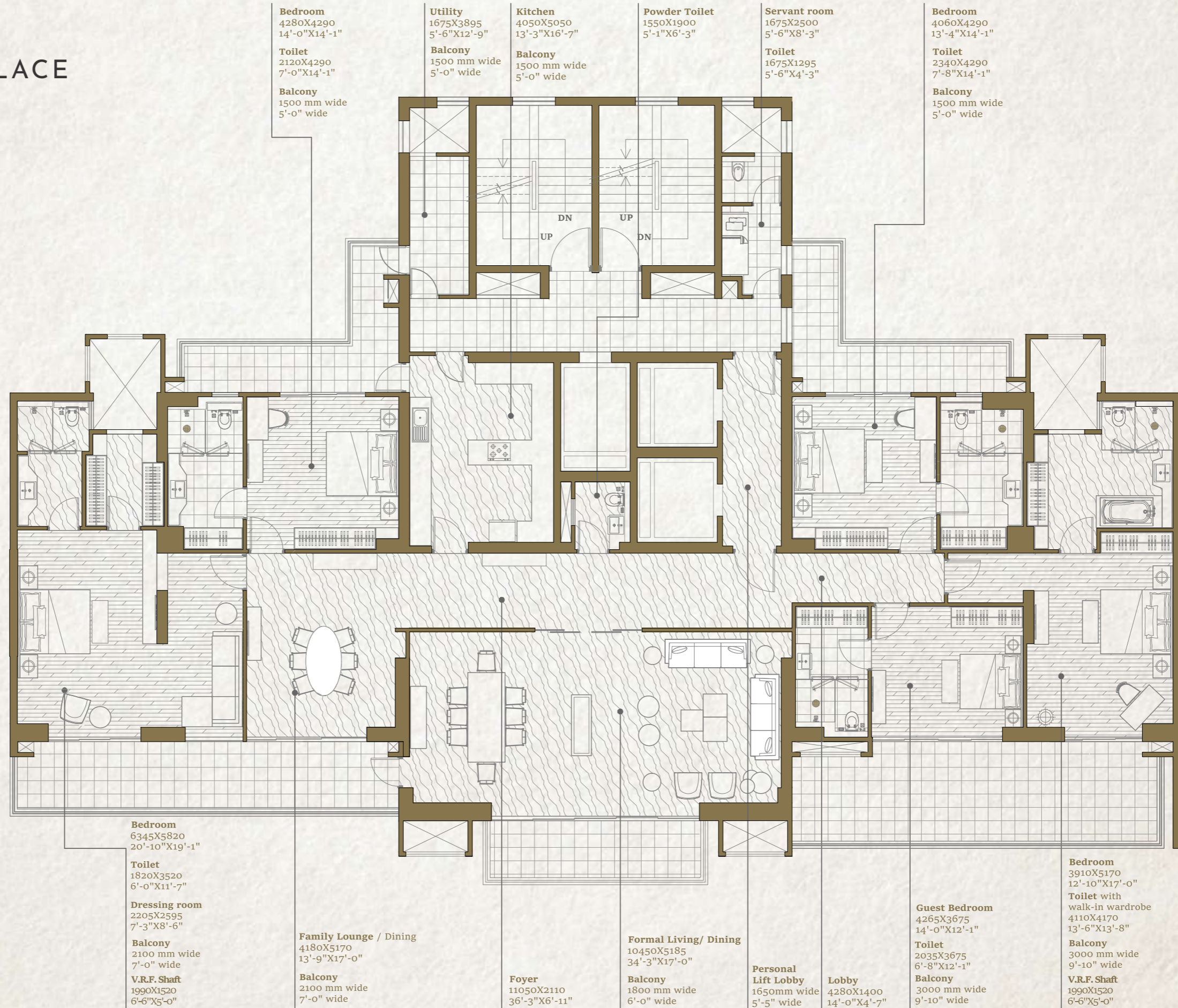
Key Plan

### Disclaimer:

1. The depiction of images of layout and features as mentioned above are based on artistic impression. The customers are advised to check and re-verify the layout and features as mentioned from the website of RERA and/or from the office of the Developer. 1 Sq mtr. = 10.764 sq. ft. The dimensions are from the unfinished walls (including skirting thickness). All Dimension are from the unfinished walls.

2. Due to Vastu reasons, thirteen floor shall be read as fourteen floor and thereafter, fourteen floor and above shall be read and start from fifteen floor so on till last floor.

# KENSINGTON PALACE



1. The depiction of images of layout and features as mentioned above are based on artistic impression. The customers are advised to check and re-verify the layout and features as mentioned from the website of RERA and/or from the office of the Developer. 1Sq mtr. = 10.764 sq. ft.  
The dimensions are from the unfinished walls (including skirting thickness).

2. Due to Vastu reasons, thirteen floor shall be read as fourteen floor and thereafter, fourteen floor and above shall be read and start from fifteen floor so on till last floor.

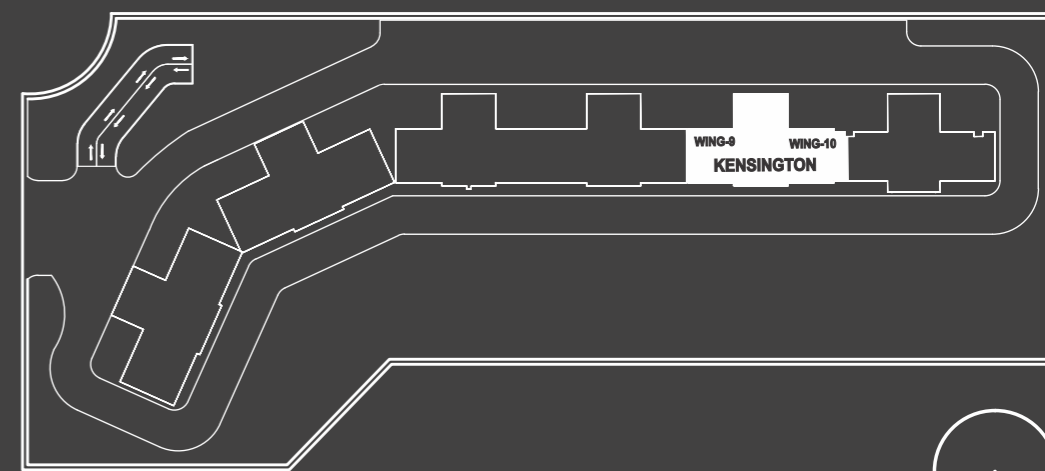


# KENSINGTON PALACE

## CONDOMINIUM - 3A (4 BHK)

Super Area - 581 Sq. mtr./ 6250 Sq. ft.  
 Built-up Area - 459 Sq. mtr./ 4950 Sq. ft.  
 Carpet Area - 328.47 Sq. mtr./ 3535 Sq. ft.  
 Balcony Area - 86.02 Sq. mtr./ 926 Sq. ft.  
 Wing - 9 & 10 (Kensington Palace)  
 Floors - 20, 21, 24, 25, 28, 29, 32, 33, 36, 37

5 Bedrooms, 5 Toilets, 1 Powder Toilet, Formal Living Room / Dining  
 Family Lounge / Dining, Lounge / Guest Bedroom, Kitchen, utility, STR Room with Toilet, Balconies

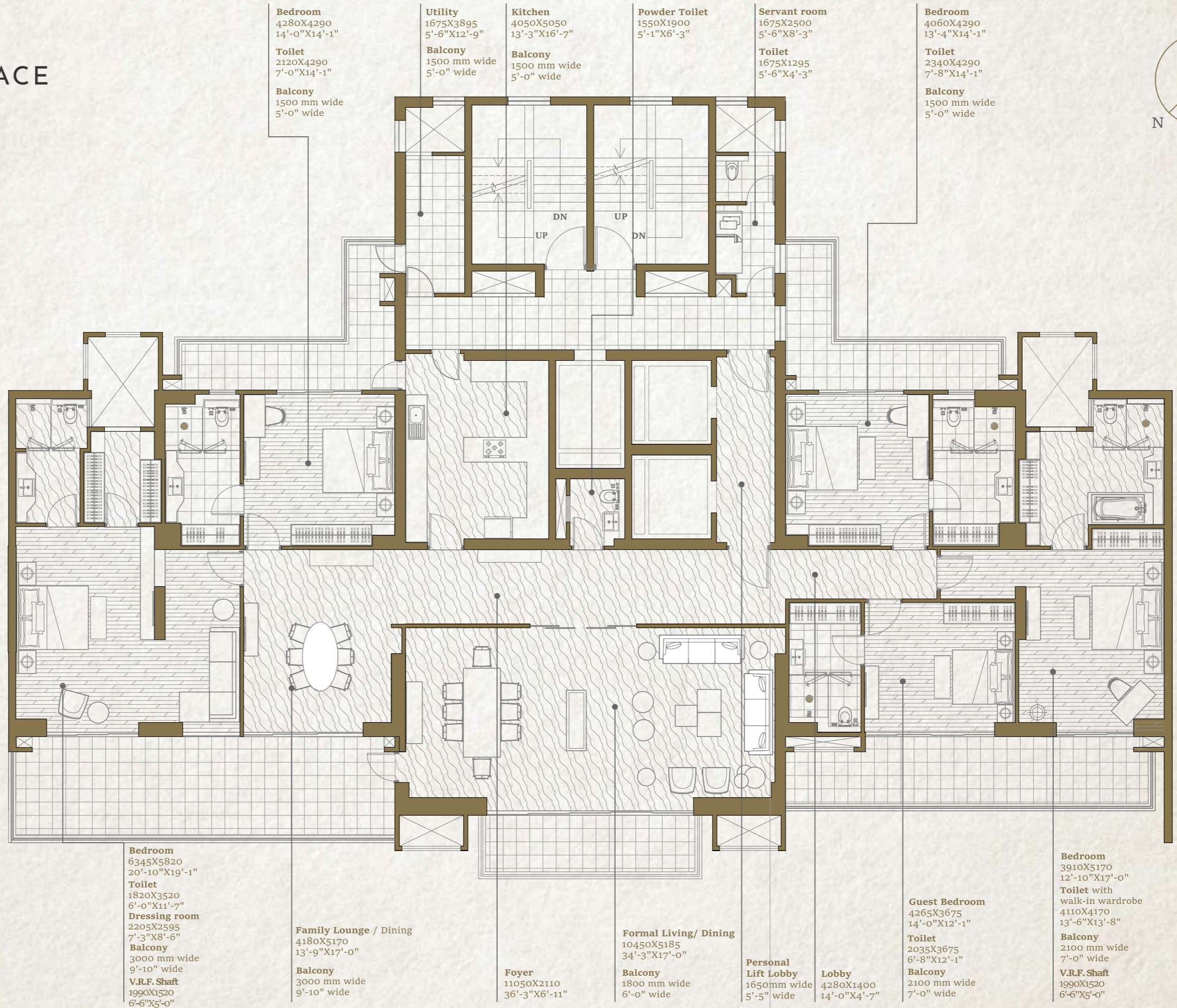


Key Plan

### Disclaimer:

1. The depiction of images of layout and features as mentioned above are based on artistic impression. The customers are advised to check and re-verify the layout and features as mentioned from the website of RERA and/or from the office of the Developer. 1 Sq mtr. = 10.764 sq. ft. The dimensions are from the unfinished walls (including skirting thickness). All Dimension are from the unfinished walls.
2. Due to Vastu reasons, thirteen floor shall be read as fourteen floor and thereafter, fourteen floor and above shall be read and start from fifteen floor so on till last floor.

# KENSINGTON PALACE



1. The depiction of images of layout and features as mentioned above are based on artistic impression. The customers are advised to check and re-verify the layout and features as mentioned from the website of RERA and/or from the office of the Developer. 1Sq mtr. = 10.764 sq. ft.  
The dimensions are from the unfinished walls (including skirting thickness).

2. Due to Vastu reasons, thirteen floor shall be read as fourteen floor and thereafter, fourteen floor and above shall be read and start from fifteen floor so on till last floor.



# KENSINGTON PALACE

## LOWER FLOOR Villament 1 (5 BHK)

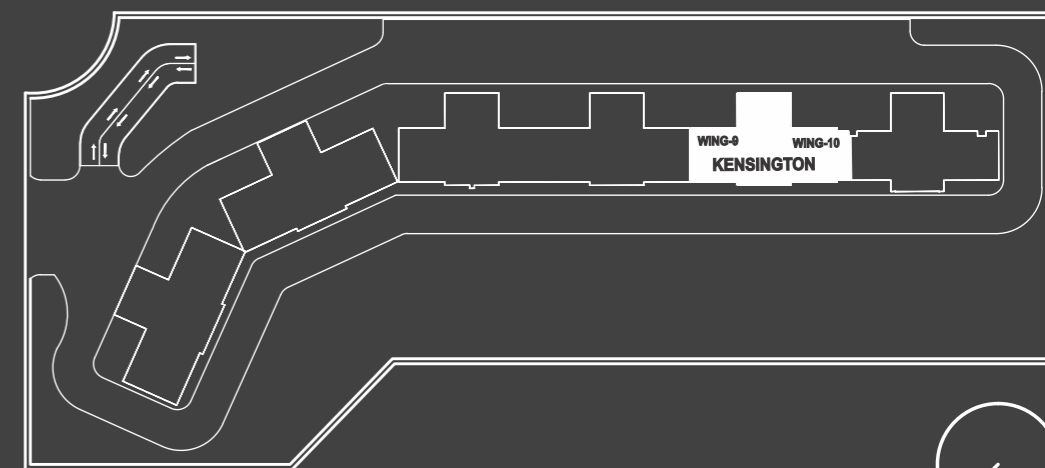
Super Area - 548 Sq. mtr./ 5900 Sq. ft.  
 Built-up Area - 396.20 Sq. m Mtr./ 4265 Sq. ft.  
 Carpet Area - 274 Sq. mtr./ 2948 Sq. ft.  
 Balcony Area - 69.21 Sq. mtr./ 745 Sq. ft.  
 Wing - 9 (Kensington Palace)  
 Floors - 1, 5, 9, 14  
 Wing: 10 (Kensington Palace)  
 Floors - 3, 7, 11, 16

5 Bedrooms, 5 Toilets, 1 Powder Room, Living Room, Lounge & Dining Room, Family Lounge, Kitchen, Pantry, STR Room, STR Toilet, Balconies

## LOWER FLOOR Villament 1A (5 BHK)

Super Area - 567 Sq. mtr./ 6100 Sq. ft.  
 Built-up Area - 410.60 Sq. mtr./ 4420 Sq. ft.  
 Carpet Area - 273 Sq. mtr./ 2941 Sq. ft.  
 Balcony Area - 87.1 Sq. mtr./ 938 Sq. ft.  
 Wing - 9 (Kensington Palace)  
 Floors - 3, 7, 11, 16  
 Wing: 10 (Kensington Palace)  
 Floors - 5, 9, 14

5 Bedrooms, 5 Toilets, 1 Powder Room, Living Room, Lounge & Dining Room, Family Lounge, Kitchen, Pantry, STR Room, STR Toilet, Balconies



Key Plan

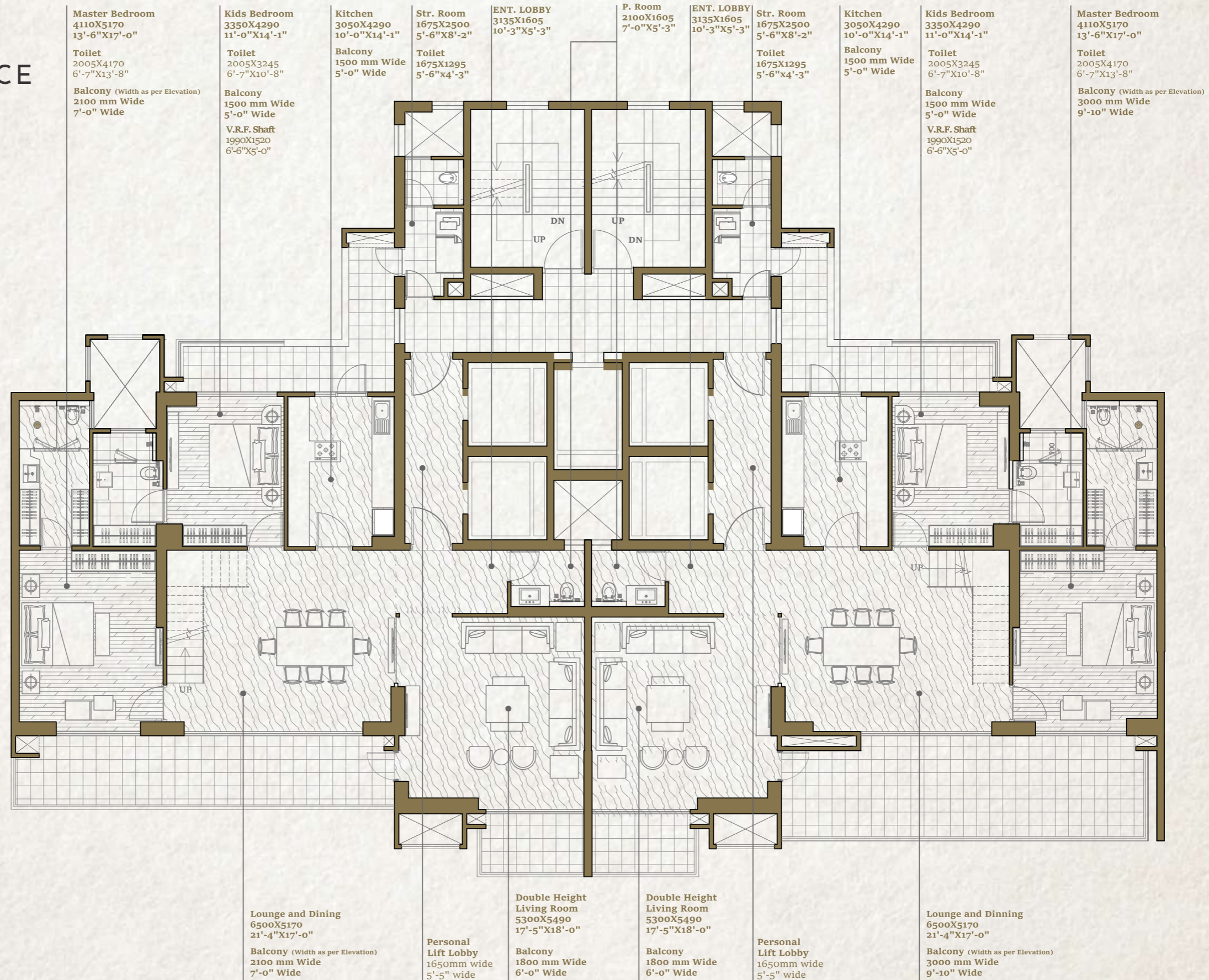
### Disclaimer:

1. The depiction of images of layout and features as mentioned above are based on artistic impression. The customers are advised to check and re-verify the layout and features as mentioned from the website of RERA and/or from the office of the Developer. 1 Sq mtr. = 10.764 sq. ft. The dimensions are from the unfinished walls (including skirting thickness). All Dimension are from the unfinished walls.

2. Due to Vastu reasons, thirteen floor shall be read as fourteen floor and thereafter, fourteen floor and above shall be read and start from fifteen floor so on till last floor.



# KENSINGTON PALACE



1. The depiction of images of layout and features as mentioned above are based on artistic impression. The customers are advised to check and re-verify the layout and features as mentioned from the website of RERA and/or from the office of the Developer. 1Sq mtr. = 10.764 sq. ft.  
The dimensions are from the unfinished walls (including skirting thickness).

2. Due to Vastu reasons, thirteen floor shall be read as fourteen floor and thereafter, fourteen floor and above shall be read and start from fifteen floor so on till last floor.



# KENSINGTON PALACE

## UPPER FLOOR Villament 1 (5 BHK)

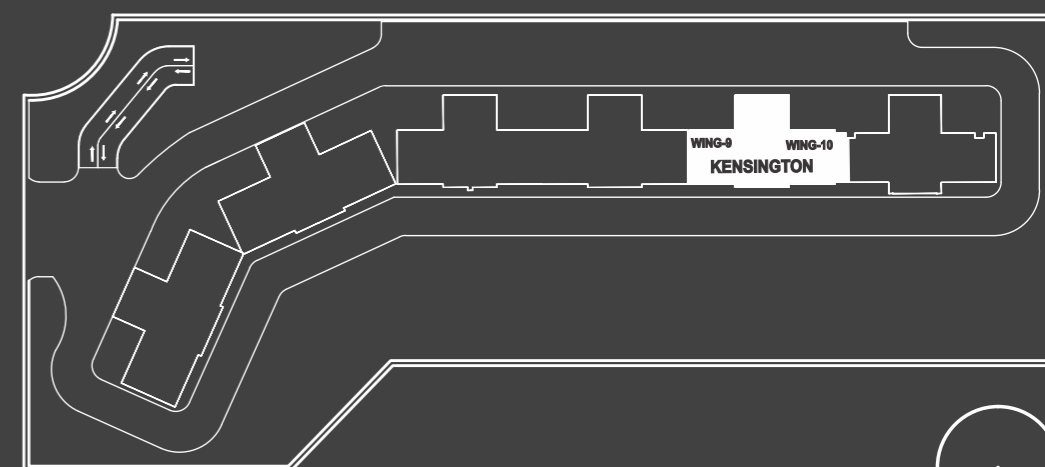
Super Area - 548 Sq. mtr./ 5900 Sq. ft.  
 Built-up Area - 396.20 Sq. mtr./ 4265 Sq. ft.  
 Carpet Area - 274 Sq. mtr./ 2948 Sq. ft.  
 Balcony Area - 69.21 Sq. mtr./ 745 Sq. ft.  
 Wing - 9 (Kensington Palace)  
 Floors - 2, 6, 10, 15  
 Wing: 10 (Kensington Palace)  
 Floors - 4, 8, 12, 17

5 Bedrooms, 5 Toilets, 1 Powder Room, Living Room,  
 Lounge & Dining Room, Family Lounge, Kitchen,  
 Pantry, STR Room, STR Toilet, Balconies

## UPPER FLOOR Villament 1A (5 BHK)

Super Area - 567 Sq. mtr./ 6100 Sq. ft.  
 Built-up Area - 410.60 Sq. mtr./ 4420 Sq. ft.  
 Carpet Area - 273 Sq. mtr./ 2941 Sq. ft.  
 Balcony Area - 87.1 Sq. mtr./ 938 Sq. ft.  
 Wing - 9 (Kensington Palace)  
 Floors - 4, 8, 12, 17  
 Wing: 10 (Kensington Palace)  
 Floors - 6, 10, 15

5 Bedrooms, 5 Toilets, 1 Powder Room, Living Room,  
 Lounge & Dining Room, Family Lounge, Kitchen,  
 Pantry, STR Room, STR Toilet, Balconies



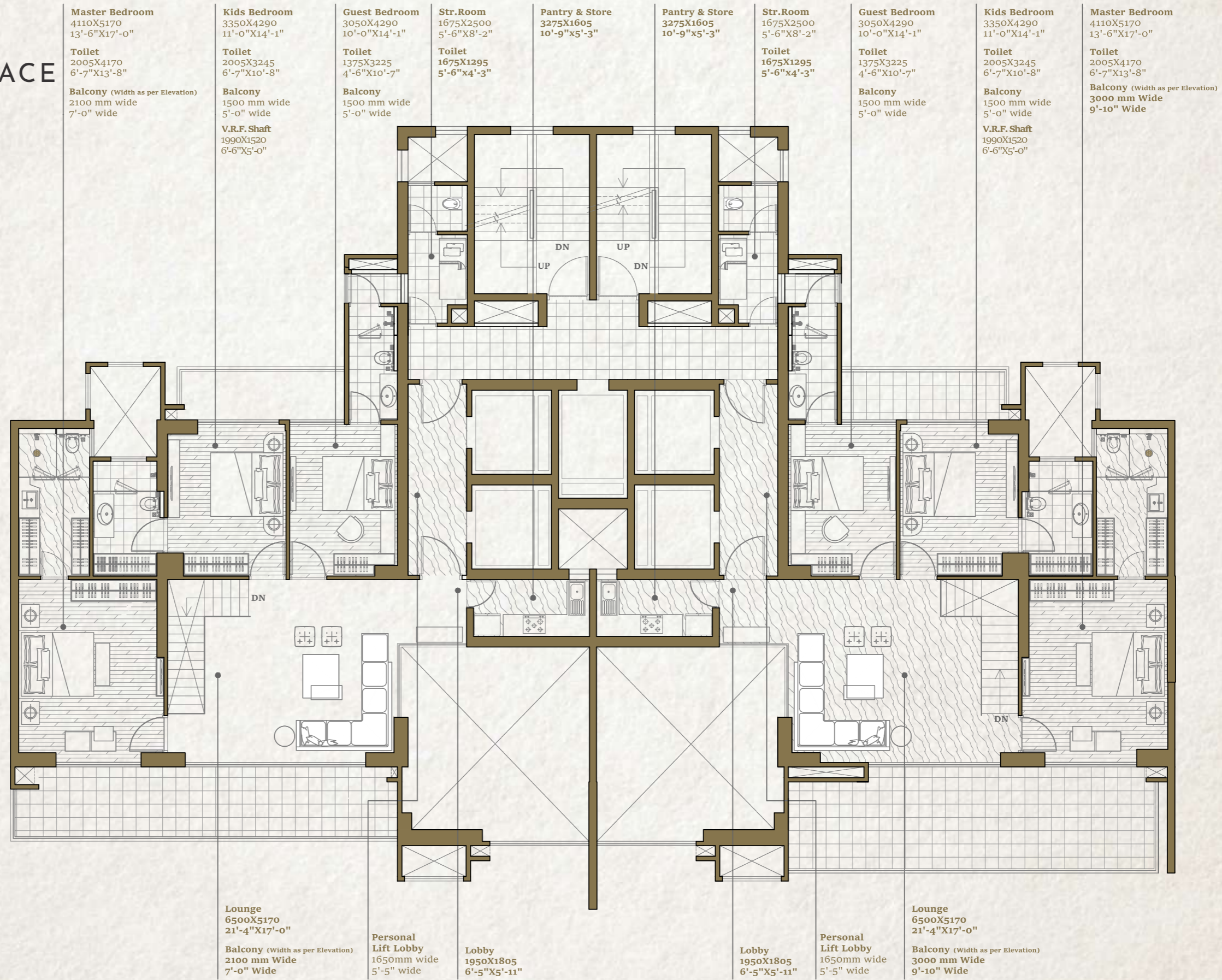
Key Plan

### Disclaimer:

1. The depiction of images of layout and features as mentioned above are based on artistic impression. The customers are advised to check and re-verify the layout and features as mentioned from the website of RERA and/or from the office of the Developer. 1 Sq mtr. = 10.764 sq. ft. The dimensions are from the unfinished walls (including skirting thickness). All Dimension are from the unfinished walls.

2. Due to Vastu reasons, thirteen floor shall be read as fourteen floor and thereafter, fourteen floor and above shall be read and start from fifteen floor so on till last floor.

# KENSINGTON PALACE



1. The depiction of images of layout and features as mentioned above are based on artistic impression. The customers are advised to check and re-verify the layout and features as mentioned from the website of RERA and/or from the office of the Developer. 1Sq mtr. = 10.764 sq. ft. The dimensions are from the unfinished walls (including skirting thickness).

2. Due to Vastu reasons, thirteen floor shall be read as fourteen floor and thereafter, fourteen floor and above shall be read and start from fifteen floor so on till last floor.

# Specification

## ARCHITECTURE

An iconic landmark project in a unique setting, amidst serenity and peace, designed by Architect Hafeez Contractor. Structure is executed in Reinforced concrete frame on reinforced concrete piled foundation using Aluminium shuttering

## BUILDING ENVELOPE

Texture paint on exterior with use of glass railing and full height glazed door windows, corner windows and GRC jaali pattern

## FLOOR TO FLOOR HEIGHTS

Entrance Hall and Lift Lobby (Ground Floor) is 8.0 mtrs in height. All the rooms and living space is 3.375 mtrs and Villaments will have double height living room with a height of 6.75 mtrs

## INTERIORS

All internal walls finished in acrylic emulsion paint with POP punning to get the richness and finesse. Toilets highlighted with large format tiles on walls. Master bathroom walls are decorated with synthetic marble.

## FLOORING

Large array Imported marble floor to all Living room, dining space, entrance foyer and kitchen with chamfered edged skirting with groove in each condominium. Warm and cozy laminated wooden flooring, around your bed, in all bedrooms, with similar skirting. Master toilet is decorated with synthetic marble floors and other toilets highlighted with large format anti skid tiles.

## CEILING

Suspended limited false ceiling finished in acrylic emulsion paint.

## HEATING & COOLING

Comfort cooling and reverse cooling provided by VRF Units to living areas and all bedrooms.

## KITCHEN

Bespoke kitchen counter top and splash back with acrylic mineral stone or granite. Dual tone, modular kitchen with featured chrome handles, soft close function and a laminated carcass. Abode stainless steel under mounted single sink bowl with feature mixer tap. Rectangular induction hob with integrated hood.

## LANDSCAPE

Landscaped private residents' balcony area designed by LSG Landscape Architect (U.S.) incorporating mixed zones, considered planting and feature lighting

## BATHROOMS

Fitted with white bath with chrome finish thermostatic trim with temperature control diverter in master bathroom. Chrome ceiling mounted or wall mounted head shower with retractable handheld shower and diverter in chrome. Frameless fixed glass shower screen adds to the elegance. White ceramic wall mounted WC with soft close and concealed cistern with discrete chrome flush plate. The WC is enclosed with glass screens in master washroom. White basin sits on marble or granite top with featured chrome basin mixer. Bespoke wall mounted mirror.

## PLUMBING

CPVC & UPVC pipes installed to supply water to toilets & Kitchen as well as vertical down takes

## DOOR FINISHES & IRONMONGERY

Majestic 8.0 ft high entrance door with veneered hardwood solid core fixed on hardwood frame with high quality door furniture. All other internal door, bedrooms and bathrooms, are 8.0 ft high in P.U. finish with feature handles fixed on polished hard wood door frames with chrome ironmongery.

## WINDOW SYSTEMS

External windows are glazed with reflective / clear glass housed with high quality system Aluminum. Majestic Glass partitions stand between your formal living room, and dining area, defining it with elegance and style.

## STR ROOM AND TOILET

Tile floor with Oil Bound distemper on walls, and conventional CP fittings in toilet. 7.0 ft high painted flush door shutter for STR room.

## WINTER BALCONIES

Winter balconies are accessed from the living room and bedrooms via glazed system Aluminum doors. Your bedroom extends into winter balconies with large format wooden look floor tiles for a feel of a wooden deck along the sky.

## ELECTRICAL

Energy efficient lighting fixtures in balconies. Modular high quality switches and sockets in each space where appropriate. TV points and telephone points for high speed broadband internet access and satellite TV is provided in living room and bedrooms. All 6 AMP lighting and 16 AMP Power circuits are on copper wiring. Smoke / Heat detectors fitted as per standard.

## POWER BACKUP

100% DG Power back-up as mentioned below 2500 sq. ft. - 3000 sq. ft. Not to exceed 5 KVA per condominium 3001 sq. ft. - 4000 sq. ft. Not to exceed 7.5 KVA per condominium 4001 sq. ft and above Not to exceed 10 KVA per condominium DG Capacity shall be at 85% of load factor & 50% over-all diversity for condominiums as well as common areas. Additional power back-up can be taken on payment basis

## SECURITY & PEACE OF MIND

24 hour three tier security systems. Main entrance gate secured with full CCTV coverage and intercom facility. Entrance lobbies at ground floor and basements, driveways are further secured. Visual colour entry system and intercom and multi point locking system for front entrance doors provide each apartment full proof security and total peace of mind for residents

## ENTRANCE LOBBIES

Double height entrance lobby amicably designed with welcome lounge and decked up with imported marble and luxury furniture. Wall cladding with an elegant combination of granite, tile, marble, inlay pattern as per design.

## ELEVATORS & LIFT LOBBY

Four high speed passenger elevators with L.M.S. systems and one service lift exclusively for your condominium or villament, and serve all residential floors and parking levels. Separate elevators for Club and Swimming pool. Typical floor lift lobbies decorated with tiles to welcome your guests.

## PARKING

Ample covered parking spaces available for residents.

# LOCATION MAP



Disclaimer: The location map is only indicative and not to scale.

## ONGOING PROJECTS

 <p>Mahagun <b>mezzaria</b> LUXURY CONDOMINIUM SECTOR-78, NOIDA</p>	 <p>MAHAGUN <b>MEADOW</b> HIGHRISE &amp; VILLA SECTOR-150, EXPRESSWAY, NOIDA</p>	 <p>MAHAGUN <b>MONTAGGE</b> 2/3/4/5 BHK HOMES CROSSINGS REPUBLIK</p>	 <p>MAHAGUN <b>MARINA WALK</b></p>
 <p>MAHAGUN <b>MANTRAA</b> SECTOR-10, GREATER NOIDA (WEST)</p>	 <p>MAHAGUN <b>MYWOODS</b> Sector-16 C Greater Noida (West)</p>	 <p>MAHAGUN <b>Millennia</b> CROSSINGS REPUBLIK</p>	 <p>MAHAGUN <b>SUITES &amp; STUDIO</b></p>

## DELIVERED PROJECTS

 <p>Mahagun <b>MORPHEUS</b> NOIDA Sector-50, Noida</p>	 <p><b>Park Plaza</b> SHAHDARA-DELHI</p>	 <p>MAHAGUN METRO MALL <b>VAISHALI</b> GHAZIABAD</p>	 <p>MAHAGUN <b>SAROVAR PORTICO</b> vaishali, ghaziabad A SAROVAR HOTEL Vaishali, Ghaziabad</p>	 <p><b>Marvella</b> Sector-78, Noida</p>	 <p>MAHAGUN <b>Moderne</b> Sector-78, Noida</p>
 <p><b>Mahagun Villa</b> Vaishali, Ghaziabad</p>	 <p>Mahagun <b>MAESTRO</b> NOIDA Sector-50, Noida</p>	 <p>MAHAGUN <b>JESTIC</b> Crossings Republik, NH-24</p>	 <p>MAHAGUN <b>SCOT+</b> Crossings Republik, NH-24</p>	 <p>Mahagun <b>Manor</b> NOIDA Sector-50, Noida</p>	 <p>MAHAGUN <b>MOSAIC</b> Modern Homes. Modest Budget. Vaishali, Ghaziabad</p>
 <p>Mahagun <b>Mansion</b> Indirapuram, Ghaziabad</p>	 <p>MAHAGUN <b>MAPLE</b> 2/3/4 BR APARTMENTS Sector-50, Noida</p>	 <p>MAHAGUN <b>PURAM</b> 1,2,3 BR Homes - NH-24, Delhi NCR NH-24, Delhi NCR</p>	 <p>MAHAGUN <b>MYWOODS</b> Sector-16 C Greater Noida (West)</p>	 <p>MAHAGUN <b>MIRABELLA</b> Sector-79, Noida</p>	 <p>Mahagun <b>mezzaria</b> LUXURY CONDOMINIUM SECTOR-78, NOIDA</p>

# CARVING TRUST WITH EACH BRICK

**Mahagun group** is a conglomerate of companies operating in commercial, residential real estate and hospitality sectors. The group is synonymous with transforming barren lands into brilliant masterpieces of architecture and style. It has successfully delivered a number of residential projects in the NCR in addition to the development of Commercial Real Estate like Shopping malls, Hotels, Cineplexes etc. However, the development of residential real estate continues to be the core focus area for the group. It has already delivered approx 15.76 million sq. ft. of residential space covering about 11500 units and projects involving development of approx. 11.57 million sq. ft. covering about 7500 approx. units are currently under execution. Absolute transparency in dealings, coupled with the highest standards and quality and timely delivery, continue to be the cornerstone of operations of the group. The group employs latest technology and techniques to cut down cost and to ensure development with sustainability by using 'Green building' techniques and through optimum usage of natural resources like water, air and natural light to cut down carbon foot print of its projects. In addition to catering to the requirements of the mid-market segment, the group has also ventured into user luxury housing segment with the recent launch of its signature brand 'M Collection'. Guided by absolute commitment, customer focus, innovation and professional expertise gained over the years, Mahagun endeavors to emerge as one of the key players in real estate construction and development, expanding its footprints to other geographical areas of the country, simultaneously diversifying its business interests.

## VISIT US

### M COLLECTION LOUNGE

Corporate Off: Office No A-19, Sector 63, Noida- 201301 (U.P.)  
Telephone: 0120-4839900/ Email: [luxury@mahagunindia.com](mailto:luxury@mahagunindia.com)

### MAHAGUN INDIA PVT. LTD.

Site Off: Cluster B-9B, Wishtown, Sector 128, Noida- 201304 (U.P.)  
Website: [www.mcollection.in](http://www.mcollection.in)

Disclaimer: The information and the plans, specifications, design, layout, artistic renderings, images, structural details and other details as mentioned in this Brochure are only indicative and the customers are advised to check and re-verify the information and the plans, specifications, design, layout, artistic renderings, images and other details as mentioned in this Brochure from the website of RERA and/or from the office of the Developer. The depiction of towers and architectural features is purely conceptualize and is based on artist impression to illustrate the appearance of tower once it is completed. No warranty is given that the tower will comply to any degree of this artist's impression. Soft furnishing, furniture and gadgets are not part of the offering. While every reasonable care has been taken in providing the information in the brochure, company, its promoters, officers or its agents cannot be held responsible for any inaccuracies. Fixtures and furnishings, other interior shown including wall paneling and wall dressings shown in Computer Generated Image and photos are indicative only and constitute no legal offering.

M  
COLLECTION  
BY MAHAGUN